



Cooperation on 10kW Energy Storage Container for Railway Stations





Overview

In light of the above literature review, this paper aims to present a more comprehensive techno-economic survey of onboard electrochemical batteries, supercapacitors, and fuel cell systems for rail vehicles.

In light of the above literature review, this paper aims to present a more comprehensive techno-economic survey of onboard electrochemical batteries, supercapacitors, and fuel cell systems for rail vehicles.

ADOR's containerized energy storage and conversion system is a compact, modular power solution designed for railway, industrial, and infrastructure applications. This self-contained unit integrates high-capacity battery storage with advanced static converters, providing stable AC and DC output for.

A new study determines what types of energy storage systems (ESS) are most promising for onboard and wayside storage. A recent article published in Renewable and Sustainable Energy Reviews unpacks how energy storage can be strategically integrated into electric rail infrastructure to decrease.

However, the last decade saw an increasing interest in rail vehicles with onboard energy storage systems (OESSs) for improved energy efficiency and potential catenary-free operation. These vehicles can minimize costs by reducing maintenance and installation requirements of the electrified.

Electrification and decarbonization is best achieved by integrating decentralized or distributed renewable generation. Across the globe, both rail grid operators and transmission and distribution system grid operators are facing growing challenges of limited grid capacity, reliability and power.

The electrification of railway systems has seen significant advancements through the integration of Energy Storage Systems (ESSs) that capture and re-utilise energy during operations. ESSs play a critical role in recovering kinetic energy from braking phases, smoothing voltage fluctuations, and.

Stationary Renewable Energy Systems The use of stationary systems using RE sources allows generating more "green" energy. This is due to the absence of restrictions on the scaling of generating plants for large areas and the use of



proven designs for generating plants. 2.2.1. Wind Turbines with a.



Cooperation on 10kW Energy Storage Container for Railway Stations



[Onboard Energy Storage Systems for Railway: ...](#)

This paper provides a detailed review of onboard railway systems with energy storage devices. In-service trains as well as relevant ...

[Request Quote](#)

[Onboard energy storage in rail transport: Review of real ...](#)

Abstract5 , TRACTION SYSTEM ARCHITECTURES AND ENERGY MANAGEMENT STRATEGIES5.2 , Multimodal systems with overhead line connection 5.3, CONCLUSIONSDespite low energy and fuel consumption levels in the rail sector, further improvements are being pursued by manufacturers and operators. Their primary efforts aim to reduce traction energy demand, replace diesel, and limit the impact of electrified overhead in-frastructures. From a system-level perspective, the integration of alternative energy so See more on ietresearch.onlinelibrary.wiley GE Vernova[PDF]

RAIL ENERGY HUBS: INTEGRATION OF RENEWABLE

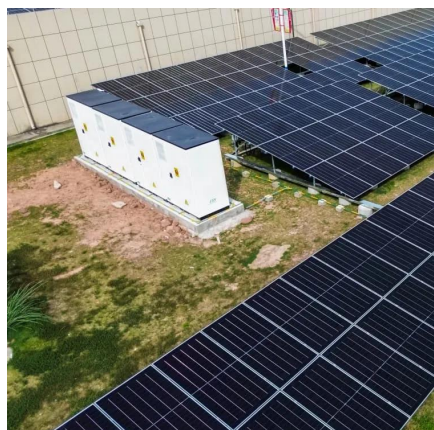
...

Integrating renewable generation with battery energy storage between the transmission/distribution grids and railway grids can help both sides to meet growing energy ...

[Request Quote](#)



Sustainable Electric Railway System Integrated With Distributed ...



The study focuses solely on the internal energy demand of a railway station, with the assumption that the energy required for train operations is supplied through traction ...

[Request Quote](#)

Review on the use of energy storage systems in railway applications

The wide array of available technologies provides a range of options to suit specific applications within the railway domain. This review thoroughly describes the operational ...

[Request Quote](#)



[Energy Storage Systems in Railway Electrification](#)

The electrification of railway systems has seen significant advancements through the integration of Energy Storage Systems (ESSs) that capture and re-utilise energy during operations.

[Request Quote](#)



[Stationary Hybrid Renewable Energy Systems for ...](#)

A comparative analysis of various hybrid electric power plant configurations, depending on the functions they perform in the ...

[Request Quote](#)



Sustainable Electric Railway System



Integrated With Distributed Energy

The study focuses solely on the internal energy demand of a railway station, with the assumption that the energy required for train operations is supplied through traction ...

[Request Quote](#)



Recent research progress and application of energy storage ...

Considering that connecting the energy storage system to electrified railway can effectively reduce energy consumption and improve system stability, a comprehensive review ...

[Request Quote](#)



How energy storage could transform the railway industry

A recent article published in Renewable and Sustainable Energy Reviews unpacks how energy storage can be strategically integrated into electric rail infrastructure to decrease ...

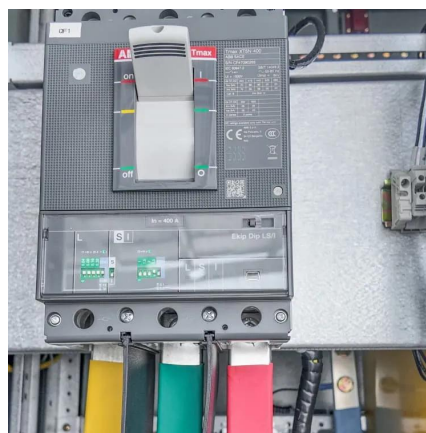
[Request Quote](#)



Onboard Energy Storage Systems for Railway: Present and Trends

This paper provides a detailed review of onboard railway systems with energy storage devices. In-service trains as well as relevant prototypes are presented and their ...

[Request Quote](#)



Onboard energy storage in rail transport:



[Review of real ...](#)

Despite low energy and fuel consumption levels in the rail sector, further improvements are being pursued by manufacturers and operators. Their primary efforts aim to reduce traction energy ...

[Request Quote](#)

[RAIL ENERGY HUBS: INTEGRATION OF RENEWABLE ...](#)

Integrating renewable generation with battery energy storage between the transmission/distribution grids and railway grids can help both sides to meet growing energy ...

[Request Quote](#)



[Containerized Energy Storage System, Mobile Power Unit](#)

Explore our modular containerized energy storage system with integrated power conversion. A flexible, mobile solution for rail depots, testing, and industrial backup.

[Request Quote](#)

[Stationary Hybrid Renewable Energy Systems for Railway](#)

A comparative analysis of various hybrid electric power plant configurations, depending on the functions they perform in the electrification systems of railway transport, has ...

[Request Quote](#)





Contact Us

For catalog requests, pricing, or partnerships, please visit:

<https://energyinnovationday.pl>

Phone: +48 22 335 1273

Email: info@energyinnovationday.pl

Scan the QR code to contact us via WhatsApp.

