



# Communication green base station is protected





## Overview

---

The protection of GSM and base station towers from lightning and overvoltage is provided by integrating external lightning systems, internal lightning systems, earthing, equipotential bonding and LV surge arrester protection techniques within the framework of IEC-62305 standard.

The protection of GSM and base station towers from lightning and overvoltage is provided by integrating external lightning systems, internal lightning systems, earthing, equipotential bonding and LV surge arrester protection techniques within the framework of IEC-62305 standard.

Communication green base station carries out lightning protection Page 1/10  
SolarTech Power Solutions Communication green base station carries out lightning protection Powered by SolarTech Power Solutions Page 2/10 Overview What is a hybrid lightning protection package?

A hybrid lightning.

How are base stations protected from lightning strikes?

1. Grounding Grid and Ground Busbars In base station lightning protection design, the grounding grid and ground busbars are key components. With proper design, they can effectively reduce the impact of lightning on the station. 2. Base Station.

The cost of installing surge protective device is much lower than the economic benefits generated when it first provides protection. Relying solely on external lightning protection Comprehensive lightning surge protection solution Lack of understanding of direct lightning strikes Definition of.

Does a lightning arrester protect a telecommunication station?

Lightning protection (strikes with indirect effects) for telecommunication stations by lightning arresters, is applicable for all electrical networks. It is also compulsory to provide protection against lightning strikes with direct.

Therefore, protection of these systems against lightning and overvoltage effects is of great importance both economically and socially. Lightning and Surge Protection



of GSM and Base Station Towers The protection of GSM and base station towers from lightning and overvoltage is provided by.

Base station (or base radio station, BS) is – according to the International Telecommunication Union 's (ITU) Radio Regulations (RR) [1] – a " land station in the land mobile service." A base station is called node B in 3G, eNB in LTE (4G), and gNB in 5G. The term is used in the context of mobile. What are the standards for cell site grounding & telecommunications tower grounding?

Our cell site grounding,telecommunications grounding and communication tower grounding methods closely follow the Motorola R56 standards and IEEE Std 142-1991 and IEEE Std 142-2007 recommended Practice for Grounding of Industrial and Commercial Power Systems guidelines for cell site and telecommunications sites.

What is a base station in radio communications?

In radio communications, a base station is a wireless communications station installed at a fixed location and used to communicate as part of one of the following: a wireless telephone system such as cellular CDMA or GSM cell site. Base stations use RF power amplifiers (radio-frequency power amplifiers) to transmit and receive signals.

Who provides cell site grounding & telecommunication tower grounding services?

The experts at E&S Grounding Solutions provide comprehensive cell site grounding and telecommunication grounding solutions for Cell Site grounding or BTS Cellular Base Station grounding. Our cell site grounding and telecommunication tower grounding services protect your valuable equipment!.

What is a wireless telephone base station?

A wireless telephone base station communicates with a mobile or hand-held phone. For example, in a wireless telephone system, the signals from one or more mobile telephones in an area are received at a nearby base station, which then connects the call to the land-line network.



## Communication green base station is protected



### [How Are Base Stations Protected Against Lightning?](#)

In base station lightning protection design, the grounding grid and ground busbars are key components. With proper design, they can effectively reduce the impact of lightning on ...

[Request Quote](#)

### [Communication green base station equipment installation ...](#)

The protection of GSM and base station towers from lightning and overvoltage is provided by integrating external lightning systems, internal lightning systems, earthing, equipotential ...

[Request Quote](#)



### **Solar Power Supply Systems for Communication Base Stations: ...**

In remote areas or islands where it is difficult to access traditional power grids, solar power supply systems can provide stable power support for power communication base stations, ensuring ...

[Request Quote](#)

### [Lightning and Surge Protection for Communication Station](#)

Install lightning rods, grounding, surge protectors, shielding, and follow standards for effective communication station protection.

[Request Quote](#)



### [Communication green base station carries out lightning ...](#)

As mobile communication base stations are widely distributed and located at commanding heights, they are prone to lightning disasters. Lightning is highly destructive.

[Request Quote](#)



### [Communication Network GSM-Base Stations and ...](#)

A direct hit of lightning or damage to GSM and base stations through electromagnetic surges can cause interruptions in communication ...

[Request Quote](#)



### [Cell Tower Grounding: Safety & Compliance ...](#)

Our electrical grounding solutions compliant with IEEE Std 142-1991 and IEE Std 142-2007 ensure that your high performance equipment is protected. ...

[Request Quote](#)

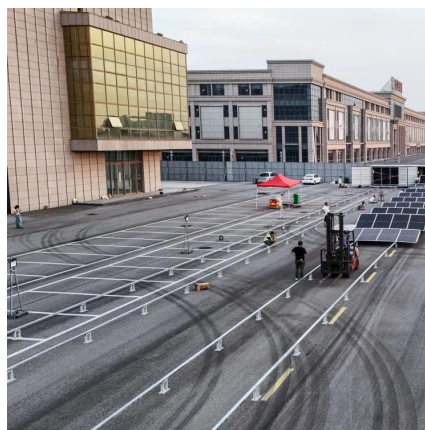


## **Base station**



Wireless communications In radio communications, a base station is a wireless communications station installed at a fixed location and used to ...

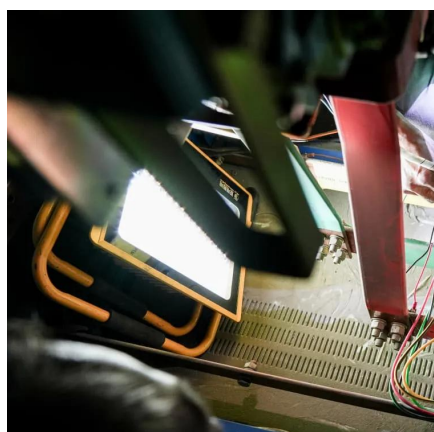
[Request Quote](#)



### [Communication Base Station Weatherproof Design , Huijue ...](#)

What if base stations could actively adapt to weather changes? Researchers at Huijue Lab are prototyping self-healing elastomers that seal microcracks within minutes.

[Request Quote](#)



### [Cell Tower Grounding: Safety & Compliance Solutions](#)

Our electrical grounding solutions compliant with IEEE Std 142-1991 and IEE Std 142-2007 ensure that your high performance equipment is protected. We provide safe and compliant cell ...

[Request Quote](#)



### **Base station**

Wireless communications In radio communications, a base station is a wireless communications station installed at a fixed location and used to communicate as part of one of the following: a ...

[Request Quote](#)

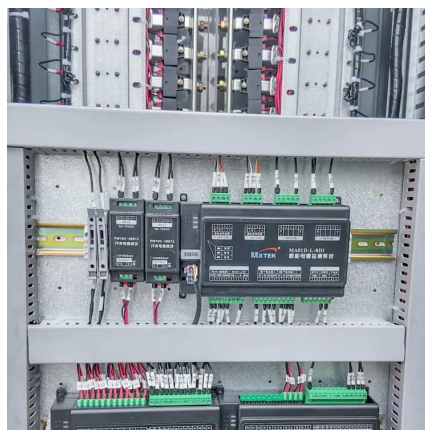


### [Our communication green base station](#)



Ericsson made a point of its green credentials at the recent Mobile World Congress, and launched a "green" base station design back in 2007. Its commitment extends from materials used in ...

[Request Quote](#)



## Communication Network GSM-Base Stations and Lightning Effect

A direct hit of lightning or damage to GSM and base stations through electromagnetic surges can cause interruptions in communication networks and damage to devices. Therefore, protection ...

[Request Quote](#)



## Contact Us

---

For catalog requests, pricing, or partnerships, please visit:

<https://energyinnovationday.pl>

Phone: +48 22 335 1273

Email: [info@energyinnovationday.pl](mailto:info@energyinnovationday.pl)

Scan the QR code to contact us via WhatsApp.

