



Communication green base station communication distance





Overview

The solutions include reconfiguring flow paths, minimizing transmission time, and adjusting signal range of base stations using software-defined networking (SDN) techniques.

The solutions include reconfiguring flow paths, minimizing transmission time, and adjusting signal range of base stations using software-defined networking (SDN) techniques.

This study presents an overview of sustainable and green cellular base stations (BSs), which account for most of the energy consumed in cellular networks. We review the architecture of the BS and the power consumption model, and then summarize the trends in green cellular network research over the.

Presenting state-of-the-art research on green radio communications and networking technology by leaders in the field, this book is invaluable for researchers and professionals working in wireless communication. Summarizing existing and ongoing research, the book explores communication architectures.

The objective is to provide recommendations for future research on green 6G networks. While acknowledging the improvements in data speeds, latency, and network reliability from 1 to 5G, the study suggests that as 5G is just beginning to be commercialized, now is an opportune time to explore its.

The green base station solution involves base station system architecture, base station form, power saving technologies, and application of green technologies. Using SDR-based architecture and distributed base stations is a different approach to traditional multiband multimode network construction.

Base station (or base radio station, BS) is – according to the International Telecommunication Union 's (ITU) Radio Regulations (RR) [1] – a " land station in the land mobile service." A base station is called node B in 3G, eNB in LTE (4G), and gNB in 5G. The term is used in the context of mobile.

Small base stations become main characters! Less wireless air travel time -> Tons of power saved LTE case-study, how much to densify?



Vs. How signals attenuate with distance?

How densification defeats the curse of distance?

All 4 Green BS combined consume 1/2 the power of red BS! Splitting to. Are green cellular base stations sustainable?

This study presents an overview of sustainable and green cellular base stations (BSs), which account for most of the energy consumed in cellular networks. We review the architecture of the BS and the power consumption model, and then summarize the trends in green cellular network research over the past decade.

What is a base station in radio communications?

In radio communications, a base station is a wireless communications station installed at a fixed location and used to communicate as part of one of the following: a wireless telephone system such as cellular CDMA or GSM cell site. Base stations use RF power amplifiers (radio-frequency power amplifiers) to transmit and receive signals.

Are green base stations a problem?

As society grows increasingly more aware of green energy sources, governments also start modifying their power rules to support them. As a result, problems with green base stations became the focus of a significant amount of recent ICT research efforts .

What are the approaches to power management for wireless base stations?

The authors provide an overview of the existing approaches of power management for wireless base stations, which include base station power control through beamforming, base station assignment based on the dynamic connectivity patterns between mobile units and base stations, smart mode switching, and cooperative relaying.



Communication green base station communication distance



[Green Radio Communication Networks: Base station power ...](#)

Presenting state-of-the-art research on green radio communications and networking technology by leaders in the field, this book is invaluable for researchers and professionals working in ...

[Request Quote](#)

Energy Efficiency Techniques in 5G/6G Networks: Green Communication

The focus is on smaller cell infrastructure and the need for optimization in terms of connection, communication, and power. The solutions include reconfiguring flow paths, ...

[Request Quote](#)



[Energy Efficiency Techniques in 5G/6G Networks: Green ...](#)

The focus is on smaller cell infrastructure and the need for optimization in terms of connection, communication, and power. The solutions include reconfiguring flow paths, ...

[Request Quote](#)



[BASE STATION ARCHITECTURE FOR GREEN WIRELESS ...](#)

Smart photovoltaic communication base station Smart BaseStation(TM) is an intelligent communication mast that can provide remote power for a range of DC and AC off-grid ...



[Request Quote](#)



Multiple smaller base stations are greener than a single ...

We propose uniform dense deployment for green future Small base stations become main characters! Less wireless air travel time -> Tons of power saved

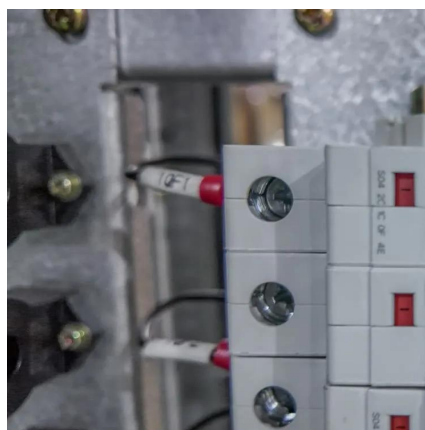
[Request Quote](#)



Green Radio Communication Networks

Summarizing existing and ongoing research, the book explores communication architectures and models, physical communications techniques, base station power-management techniques, ...

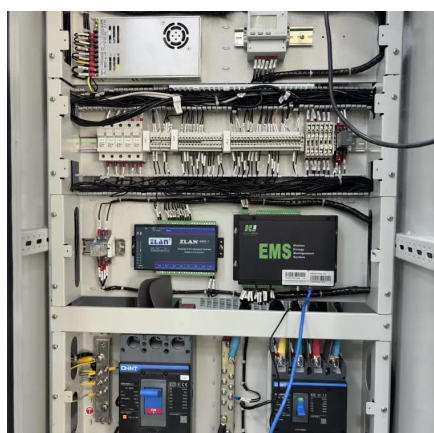
[Request Quote](#)



Optimal energy-saving operation strategy of 5G base station with

To further explore the energy-saving potential of 5G base stations, this paper proposes an energy-saving operation model for 5G base stations that incorporates ...

[Request Quote](#)



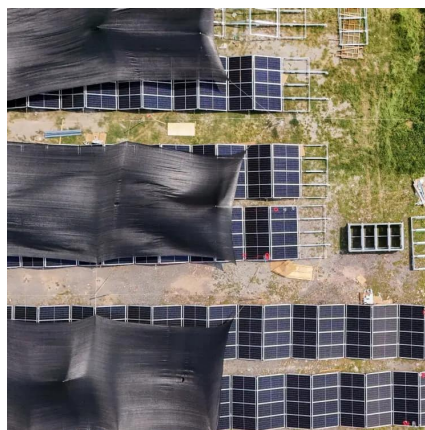
Toward Green Network: An



Expanding of Base Station Energy ...

In this article, a robust RL-based multicells sleeping model called graph deep deterministic policy gradient (GDDPG) is developed for handling highly complex communication scenarios. ...

[Request Quote](#)



Base station

In radio communications, a base station is a wireless communications station installed at a fixed location and used to communicate as part of one of the following: a push-to-talk two-way radio ...

[Request Quote](#)

BASE STATION ARCHITECTURE FOR GREEN WIRELESS COMMUNICATIONS

Smart photovoltaic communication base station Smart BaseStation(TM) is an intelligent communication mast that can provide remote power for a range of DC and AC off-grid ...

[Request Quote](#)



[Our communication green base station](#)

Ericsson made a point of its green credentials at the recent Mobile World Congress, and launched a "green" base station design back in 2007. Its commitment extends from materials used in ...

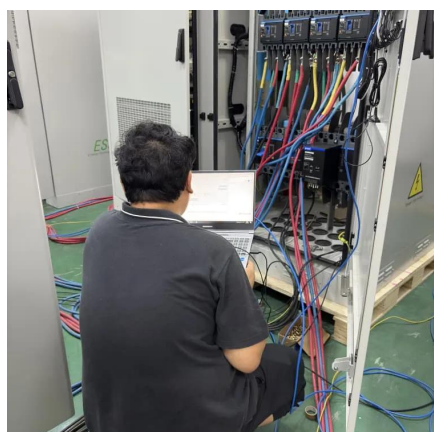
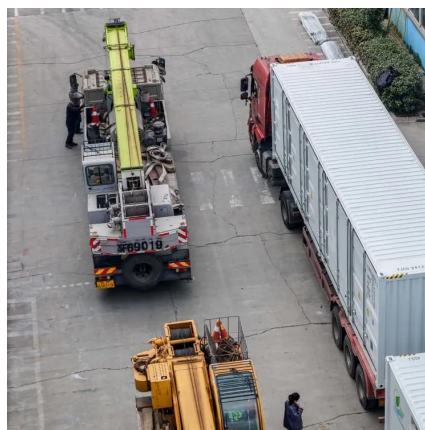
[Request Quote](#)

Base station



In radio communications, a base station is a wireless communications station installed at a fixed location and used to communicate as part of one of the ...

[Request Quote](#)



Green and Sustainable Cellular Base Stations: An Overview and ...

We review the architecture of the BS and the power consumption model, and then summarize the trends in green cellular network research over the past decade.

[Request Quote](#)



Contact Us

For catalog requests, pricing, or partnerships, please visit:

<https://energyinnovationday.pl>

Phone: +48 22 335 1273

Email: info@energyinnovationday.pl

Scan the QR code to contact us via WhatsApp.

