



# Communication between base station and mobile station





## Overview

---

A is a network of handheld (cell phones) in which each phone communicates with the by through a local antenna at a cellular base station (cell site). The coverage area in which service is provided is divided into a mosaic of small geographical areas called "cells", each served by a separate low power multichannel and antenna at a base station. All the cell phones within a cell communicate with the system thr.

A base station receives signals from mobile devices within its coverage area, and forwards these signals to the network's central system. It converts the received radio waves into digital data, which is then processed and routed appropriately.

A base station receives signals from mobile devices within its coverage area, and forwards these signals to the network's central system. It converts the received radio waves into digital data, which is then processed and routed appropriately.

The idea of base stations is anchored in their function to provide coverage, capacity, and connectivity, hence allowing for extending the working capabilities of mobile phones and other radio gear. What is Base Station?

What is Base Station?

A base station represents an access point for a wireless.

A cell site, cell phone tower, cell base tower, or cellular base station is a cellular-enabled mobile device site where antennas and electronic communications equipment are placed (typically on a radio mast, tower, or other raised structure) to create a cell, or adjacent cells, in a cellular.

Base stations play a pivotal role in mobile telecommunications, acting as the nexus between users' cell phones and the broader network infrastructure. Understanding how these stations function is essential for anyone engaged in the field of telecommunications or simply interested in the mechanics.

Base stations and cell towers are critical components of cellular communication systems, serving as the infrastructure that supports seamless mobile connectivity. These structures facilitate the transmission and reception of signals between mobile devices and the wider network, enabling voice.

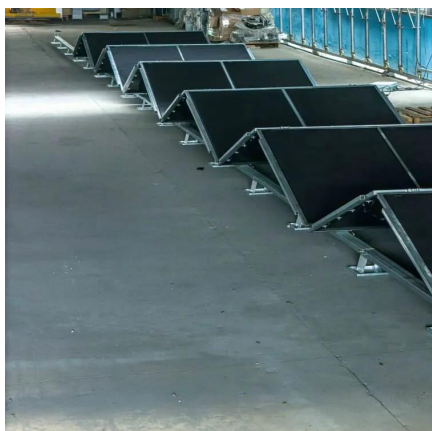


A base station plays a pivotal role in the realm of telecommunications, acting as the cornerstone of connectivity. It enables seamless communication by linking various wireless devices to broader networks, ensuring that data flows efficiently from one point to another. A base station is an integral.

Mobile communication base station is a form of radio station, which refers to a radio transceiver station that transmits information between mobile phone terminals through a mobile communication exchange center in a certain radio coverage area. The construction of mobile communication base stations.



## Communication between base station and mobile station



### Mobile base station

Explore STMicroelectronics' mobile base station solutions, enhancing connectivity and performance for telecom networks.

[Request Quote](#)

### Base Stations and Cell Towers: The Pillars of Mobile Connectivity

Base stations use antennas mounted on cell towers to send and receive radio signals to and from mobile devices within their coverage area. This communication enables ...

[Request Quote](#)



### Base Station's Role in Wireless Communication Networks

What is a base station? A base station is a critical component of wireless communication networks. It serves as the central point of a network that connects various ...

[Request Quote](#)



### Base station

In mobile telephony, it provides the connection between mobile phones and the wider telephone network. In a computer network, it is a transceiver ...

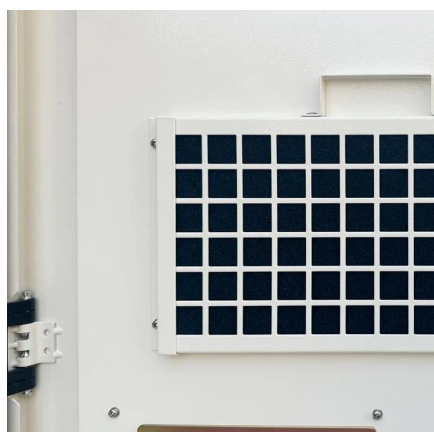
[Request Quote](#)



## What Is the Role of a Base Station in Wireless Communication?

Base stations are critical components in wireless communication networks, serving as the intermediary between mobile devices and the core network. They play a vital role in ...

[Request Quote](#)



## Cell site

Summary Overview Operation Temporary sites Employment Spy agency setup Off-grid systems Camouflage

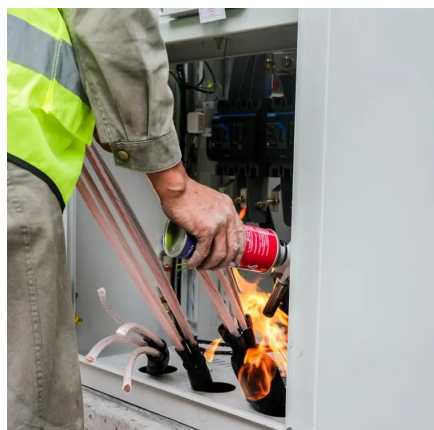
A cellular network is a network of handheld mobile phones (cell phones) in which each phone communicates with the telephone network by radio waves through a local antenna at a cellular base station (cell site). The coverage area in which service is provided is divided into a mosaic of small geographical areas called "cells", each served by a separate low power multichannel transceiver and antenna at a base station. All the cell phones within a cell communicate with the system thr...

[Request Quote](#)



## Types and Applications of Mobile Communication Base Stations

In the uplink path, the signal of the mobile phone in the coverage area is processed by the uplink



amplification link in the same way and then transmitted to the corresponding ...

[Request Quote](#)

## What Is A Base Station?

The base station acts as the primary hub, transmitting messages out to mobile units and receiving their responses, which ensures clear and reliable communication across ...

[Request Quote](#)



## Types and Applications of Mobile Communication ...

In the uplink path, the signal of the mobile phone in the coverage area is processed by the uplink amplification link in the same ...

[Request Quote](#)

## Base Stations

Backhaul Connection: The backhaul connection links the base station to the core network in the mobile communication system. It provides for the interchange of data between ...

[Request Quote](#)



## Cell site



All the cell phones within a cell communicate with the system through that cell's antenna, on separate frequency channels assigned by the base station from a common pool of frequencies ...

[Request Quote](#)

## Base station

In mobile telephony, it provides the connection between mobile phones and the wider telephone network. In a computer network, it is a transceiver acting as a switch for computers in the ...

[Request Quote](#)



## [Base Station's Role in Wireless Communication Networks](#)

What is a base station? A base station is a critical component of wireless communication networks. It serves as the central point of a network that connects various devices, such as ...

[Request Quote](#)

## What Is A Base Station?

The base station acts as the primary hub, transmitting messages out to mobile units and receiving their responses, which ...

[Request Quote](#)



## [Understanding Base Stations in Mobile](#)



## [Communication](#)

In summary, base stations play a multifaceted role in mobile communication by ensuring effective signal transmission and reception, executing seamless handoff procedures, and maintaining ...

[Request Quote](#)

## [Understanding Base Stations in Mobile ...](#)

In summary, base stations play a multifaceted role in mobile communication by ensuring effective signal transmission and reception, executing ...

[Request Quote](#)





## Contact Us

---

For catalog requests, pricing, or partnerships, please visit:

<https://energyinnovationday.pl>

Phone: +48 22 335 1273

Email: [info@energyinnovationday.pl](mailto:info@energyinnovationday.pl)

Scan the QR code to contact us via WhatsApp.

