



Classification standard for outdoor wireless base stations





Overview

This article describes the different classes or types of 5G NR Base Stations (BS), including BS Type 1-C, BS Type 1-H, BS Type 1-O, and BS Type 2-O. 5G NR (New Radio) is the latest wireless cellular standard, succeeding LTE/LTE-A. It adheres to 3GPP specifications from Release.

This article describes the different classes or types of 5G NR Base Stations (BS), including BS Type 1-C, BS Type 1-H, BS Type 1-O, and BS Type 2-O. 5G NR (New Radio) is the latest wireless cellular standard, succeeding LTE/LTE-A. It adheres to 3GPP specifications from Release.

The present document can be downloaded from the ETSI Search & Browse Standards application. The present document may be made available in electronic versions and/or in print. The content of any electronic and/or print versions of the present document shall not be modified without the prior written.

TP-LINK's Outdoor Wireless Base Station is dedicated to cost effective solutions for outdoor wireless networking applications. With its centralized management application, it is exible and ideal for point-to-point, point-to-multipoint and outdoor Wi-Fi coverage applications. As network scale.

This article describes the different classes or types of 5G NR Base Stations (BS), including BS Type 1-C, BS Type 1-H, BS Type 1-O, and BS Type 2-O. 5G NR (New Radio) is the latest wireless cellular standard, succeeding LTE/LTE-A. It adheres to 3GPP specifications from Release 15 onwards. In 5G NR.

BS type 1-C requirements are applied at the BS antenna connector (port A) for a single transmitter or receiver with a full complement of transceivers for the configuration in the normal operating conditions. Home > Technical Articles > 5G NR Base Station types As per 3GPP specifications for 5G NR.

TP-LINK's 5GHz 300Mbps * Outdoor Wireless Base Station is specifically designed to provide an effective solution for outdoor wireless networking applications. With its centralized management platform and high degree of flexibility, it is the ideal choice for providing point-to-point.

Enterprises can harness the advantages of 5G private networks for businesses with



support from the Third Generation Partnership Project (3GPP) standards, and more. In order to provide comprehensive coverage of 5G new radio (NR) private network, 5G NR measurement applications running on a signal. How many types of base station configurations can be defined based on 3GPP?

You can define four types of base station configurations according to 3GPP, depending on the conducted or radiated type of the test. Type 1-C refers to the NR base station operating at FR1 with requirements defined at individual antenna connectors.

What is a wide area base station?

Wide Area base stations. This type of base station is intended for macro-cell scenarios, defined with a minimum coupling loss between BS and UE of 70 dB. Local Area base stations. This type of base station is intended for pico-cell scenarios, defined with a minimum coupling loss between BS and UE of 45 dB.

What are the different types of base stations?

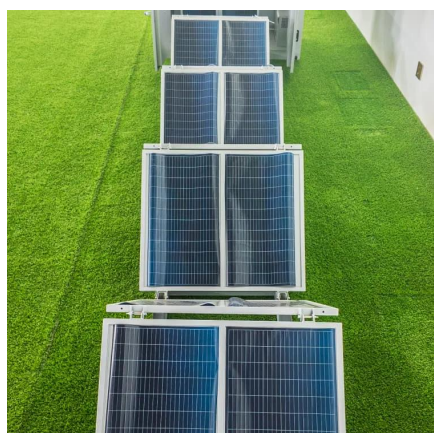
Some basic types of base stations are as follows: Macro-base stations are tall towers ranging from 50 to 200 feet in height, placed at strategic locations to provide maximum coverage in a given area. Those are equipped with large towers and antennas that transmit and receive radio signals from wireless devices.

What is the difference between a wide area and a medium range base station?

Wide area base stations are characterized by requirements derived from Macrocell scenarios with a BS to UE minimum distance along the ground equal to 35m. Medium range base stations are characterized by requirements derived from microcell scenarios with a BS to UE minimum distance along the ground equal to 5m.



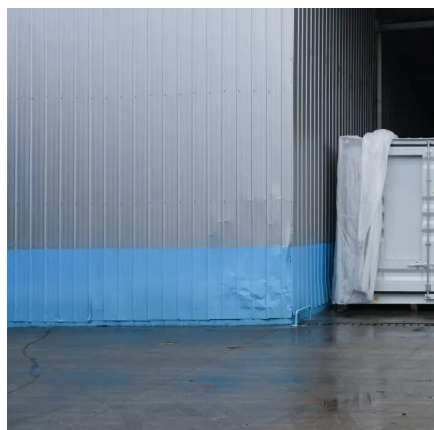
Classification standard for outdoor wireless base stations



Base Station Class

The base station vendor declares which types of requirements a base station conforms to and hence which class a base station belongs to. In this way, the specifications allow for several ...

[Request Quote](#)



TS 138 113

The present document specifies the applicable requirements, procedures, test conditions, performance assessment and performance criteria for NR base stations and associated ...

[Request Quote](#)

5G NR Base Station types

It covers Wide area base stations, Medium range base stations, and local area base stations. The Associated deployment scenarios for each class are exactly the same for BS with and without ...

[Request Quote](#)



ETSI TR 125 951 V16.0.0 (2020-08)

For the UTRA evolution requirement specifications for other types of base stations are needed as well to take into account different use scenarios and radio environments.

[Request Quote](#)



Base Stations

The present-day tele-space is incomplete without the base stations as these constitute an important part of the modern-day scheme of wireless communications. They are ...

[Request Quote](#)



What is 5G NR Base Station Types

5G New Radio (NR) base stations, also known as gNBs, are classified into different types based on their deployment scenarios, frequency ranges, and technical requirements. Here's a ...

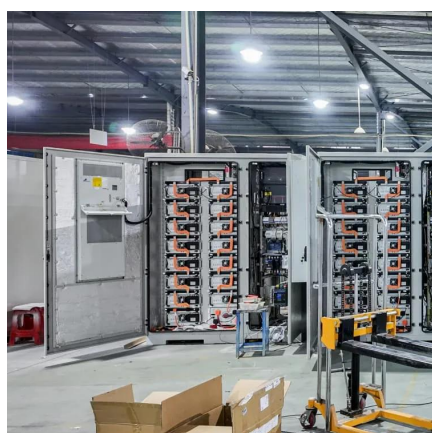
[Request Quote](#)



[5GHz 300Mbps Outdoor Wireless Base Station](#)

This industry-leading hardware ensures that Pharos Series Base Stations can be deployed in a wide variety of environments, withstanding broad ranges of humidity and ...

[Request Quote](#)



WBS510 & WBS210 1.1 Datasheet



With its centralized management application, it is exible and ideal for point-to-point, point-to-multipoint and outdoor Wi-Fi coverage applications.

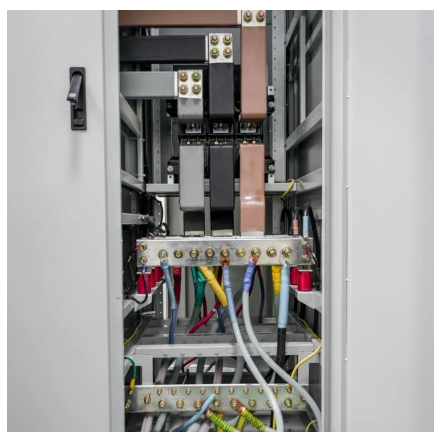
[Request Quote](#)



[5GHz 300Mbps Outdoor Wireless Base Station](#)

Up to 8% cash back. This industry-leading hardware ensures that Pharos Series Base Stations can be deployed in a wide ...

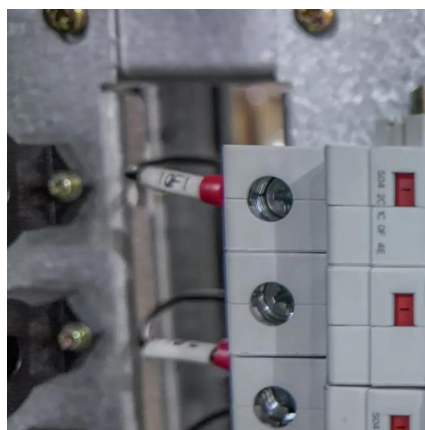
[Request Quote](#)



[Optimize Signal Quality In 5G Private Network Base Stations](#)

Chapter 6 of these specifications lays out the requirements for transmission tests for the base station transmitters (Tx). You can define four types of base station configurations according to ...

[Request Quote](#)



[Understanding 5G NR Base Station Classes](#)

Learn about the different classes of 5G NR base stations (BS), including Type 1-C, Type 1-H, Type 1-O, and Type 2-O, and their specifications.

[Request Quote](#)





Contact Us

For catalog requests, pricing, or partnerships, please visit:

<https://energyinnovationday.pl>

Phone: +48 22 335 1273

Email: info@energyinnovationday.pl

Scan the QR code to contact us via WhatsApp.

