



# Cellular communication technology base station distance





## Overview

---

The typical range of a base station can be from a few hundred meters to several kilometers, with practical ranges often being smaller due to interference and other factors.

The typical range of a base station can be from a few hundred meters to several kilometers, with practical ranges often being smaller due to interference and other factors.

A cell site, cell phone tower, cell base tower, or cellular base station is a cellular-enabled mobile device site where antennas and electronic communications equipment are placed (typically on a radio mast, tower, or other raised structure) to create a cell, or adjacent cells, in a cellular.

The present-day tele-space is incomplete without the base stations as these constitute an important part of the modern-day scheme of wireless communications. They are referred to as cell towers or cellular antennas. These types of objects are an inevitability since they serve the purpose of.

The backbone infrastructure connects base stations to each other and to other systems (internet, ISDN, PSTN, other cellular technologies, etc.). These connections between subsystems are called interfaces. Figure 1: GSM Network Architecture  
Mobile and base stations communicate using radio frequency.

These base stations provide the cell with the network coverage which can be used for transmission of voice, data, and other types of content. In radio communications, a transceiver is a two-way radio that combines both a radio transmitter and a receiver that exchanges information in half-duplex.

Per ITU-R P.1410 recommendations, base station antenna heights typically range between 15-60 meters. Urban deployments favor 25-35m, rural coverage requires 40-55m, while 5G mmWave systems operate efficiently at 15-25m. Critical factors include propagation models, terrain, and frequency bands.

The typical range of a base station can be from a few hundred meters to several kilometers, with practical ranges often being smaller due to interference and other factors. Network operators may use multiple base stations and other techniques to



optimize coverage and capacity within their service.



## Cellular communication technology base station distance



### [Cellular Communication Basics: A Tutorial](#)

Connectivity between cellular systems, using fiber optic, microwave, or satellite links, is essential for long-distance calls. In cellular network deployment, an area is divided into clusters, which ...

[Request Quote](#)

### [Cellular Networks, Cells, and Base Stations -- EITC](#)

A cell is the geographic area that is covered by a single base station in a cellular network. A network for wireless communications is comprised of a large number of base ...

[Request Quote](#)



### [CELLULAR Definition & Meaning . Dictionary](#)

CELLULAR definition: pertaining to or characterized by cellules or cells, especially minute compartments or cavities. See examples of cellular used in a sentence.

[Request Quote](#)

## Base Stations and Cell Towers: The Pillars of Mobile Connectivity

Base stations are equipped with technology to manage network traffic, optimize signal strength, and ensure efficient use of the radio spectrum. They handle handovers when ...



[Request Quote](#)



### [Cellular Phones and Devices , Consumer Cellular](#)

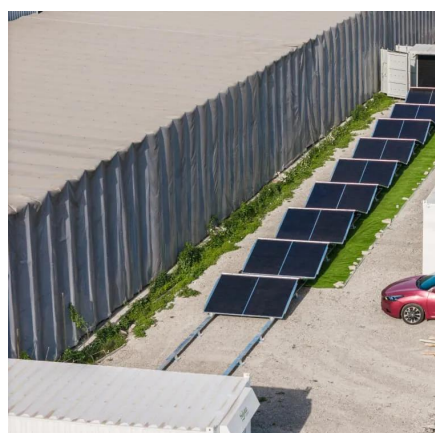
Check out the wide selection of cellular phones and devices from Consumer Cellular. You're sure to find the right cellular phone or device for your needs.

[Request Quote](#)

### **CELLULAR Definition & Meaning**

The meaning of CELLULAR is of, relating to, or consisting of cells. How to use cellular in a sentence.

[Request Quote](#)



### [Phone and Internet Services , UScellular® Official Site](#)

Welcome to UScellular, your destination for the latest phones, plans, and fast internet service. Enjoy nationwide 5G coverage to keep you connected to what matters most.

[Request Quote](#)

### **Cellular network**



A cellular network or mobile network is a telecommunications network where the link to and from end nodes is wireless and the network is distributed over land areas called cells, each served ...

[Request Quote](#)



## Base Stations

Unlike base stations, which deal with direct communications between mobile devices and towers, Mobile Switching Centers (MSCs) ...

[Request Quote](#)



## Base Station Antenna Height Recommendations Explained

Per ITU-R P.1410 recommendations, base station antenna heights typically range between 15-60 meters. Urban deployments favor 25-35m, rural coverage requires 40-55m, ...

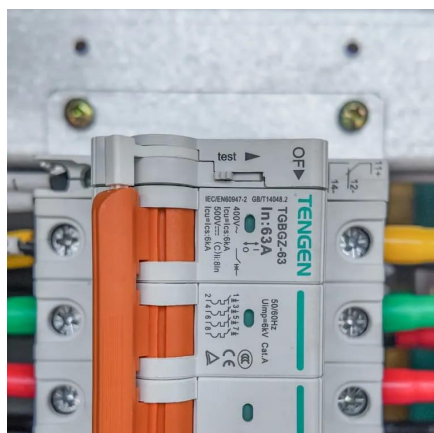
[Request Quote](#)



## Cellular Definition & Meaning , Britannica Dictionary

CELLULAR meaning: 1 : of, relating to, or made of the cells of living things; 2 : relating to a system that uses radio waves instead of wires to send telephone signals

[Request Quote](#)



## CELLULAR , definition in the Cambridge



## [English Dictionary](#)

The cellular environment might thus constitute a crucial factor for the regulation and modulation of various biological processes.

[Request Quote](#)



## **CELLULAR , English meaning**

Add to word list biology having to do with the cells of an organism (Definition of cellular from the Cambridge Academic Content Dictionary © Cambridge University Press)

[Request Quote](#)

## **Transmission distance between cellular user and base station ...**

In order to improve communication between smart home devices, this paper presents a novel approach that particularly addresses interference caused by different transmission systems.

[Request Quote](#)



## [What is the range of a typical communication base station](#)

4G (LTE): Can have a range of up to 10 kilometers (6 miles) under ideal conditions, but practical ranges are typically around 1-2 kilometers (0.6-1.2 miles) in urban areas and up to 5 ...

[Request Quote](#)

## **Base Stations**



Unlike base stations, which deal with direct communications between mobile devices and towers, Mobile Switching Centers (MSCs) oversee the routing of calls and data ...

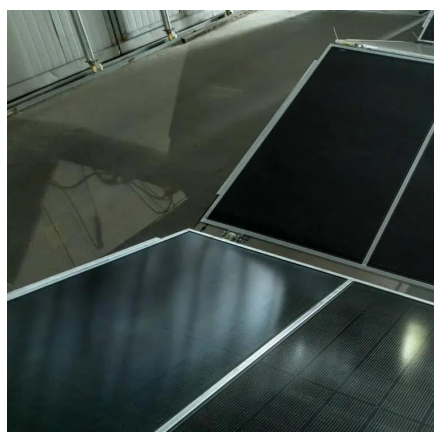
[Request Quote](#)



## Optimal location of base stations for cellular mobile network

In this paper, we address the classical problem of locating base stations for a mobile cellular network to serve mobile users in a given geographical area considering the users' ...

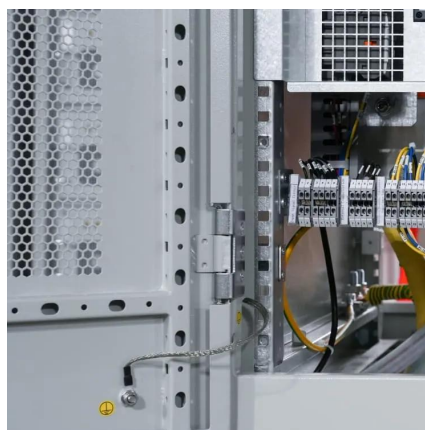
[Request Quote](#)



## [Consumer Cellular Cell Phones & Plans](#), [Consumer Cellular](#)

Cellular service is not available in all areas and is subject to system limitations. On single-line unlimited data plans, access to high-speed data will be reduced after 35GB of ...

[Request Quote](#)



## Cell site

Cell phone traffic through a single site is limited by the base station's capacity; of -56 dBm signal there is a finite number of calls or data traffic that a base station can handle at once. This ...

[Request Quote](#)



## Cellular settings in Windows



The following is a list of the cellular settings that you can use to try and fix cellular connection problems. Settings vary by Windows 10 device model and mobile operator.

[Request Quote](#)





## Contact Us

---

For catalog requests, pricing, or partnerships, please visit:

<https://energyinnovationday.pl>

Phone: +48 22 335 1273

Email: [info@energyinnovationday.pl](mailto:info@energyinnovationday.pl)

Scan the QR code to contact us via WhatsApp.

