



Can the battery be charged at the station





Overview

Yes, most modern models support “pass-through charging,” allowing you to recharge and discharge simultaneously. However, this feature isn’t universal, and improper use can damage your device or reduce its lifespan.

Yes, most modern models support “pass-through charging,” allowing you to recharge and discharge simultaneously. However, this feature isn’t universal, and improper use can damage your device or reduce its lifespan.

The answer isn’t just a simple yes or no—it involves a closer look at pass-through charging, power management, and long-term battery health. In this article, we’ll explore everything you need to know about using your portable power station while it’s plugged in. Pass-through charging is the ability.

But a common question many users ask is: Can you charge a portable power station while using it to power other devices?

The answer isn’t as simple as a yes or no—it depends on several technical and safety factors, including the model, battery chemistry, internal design, and how much power you’re.

To charge a portable power station, you can mainly use four types of outlets - home outlets, car outlets, solar panels and a generator. Let’s take a look at each one in turn. The easiest and most common way to charge your portable power station is with a wall outlet. This method is ideal for.

Yes, most modern models support “pass-through charging,” allowing you to recharge and discharge simultaneously. However, this feature isn’t universal, and improper use can damage your device or reduce its lifespan. The EcoFlow DELTA Pro (model: EFDELTA PRO) is a powerhouse with a 3.6kWh capacity and.

A power station, or a portable power station or battery generator, is a compact device with a built-in battery that supplies electrical power when required. Unlike traditional gas generators that make noise, portable power stations run on rechargeable batteries, allowing them to operate without.

A portable power station stores energy in a battery, which can be charged through



solar panels, wall outlets, or car chargers. It converts this stored energy into electrical power to run devices like laptops, smartphones, and small appliances. Compact and convenient, it offers a reliable power.



Can the battery be charged at the station



[How to Charge a Portable Power Station?](#)

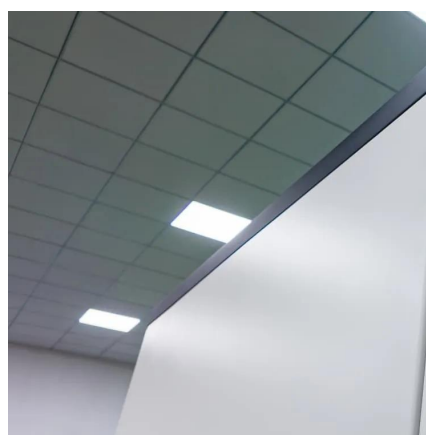
When it comes to charging a portable power station, there are three primary methods: wall outlet charging, ...

[Request Quote](#)

[How to Charge a Portable Power Station?](#)

When it comes to charging a portable power station, there are three primary methods: wall outlet charging, solar panel charging, and car charger (12V DC) charging. Each ...

[Request Quote](#)



[How Does a Portable Power Station Work? Everything You ...](#)

Lastly, the charging unit allows you to recharge the power station. Whether it's through a wall outlet, a car charger, or even solar panels, this component ensures that your ...

[Request Quote](#)

[How Does a Portable Power Station Work?](#)

Lastly, the charging unit allows you to recharge the power station. Whether it's through a wall outlet, a car charger, or even solar ...

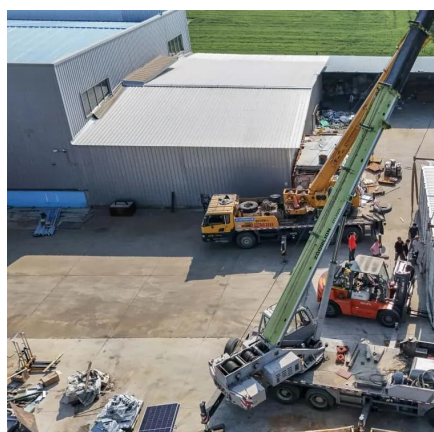
[Request Quote](#)



4 Best Ways on How to Charge/Recharge a Portable Power Station

Yes, you can charge a portable power station while using it, a process known as pass-through charging. This feature allows you to simultaneously power devices and recharge ...

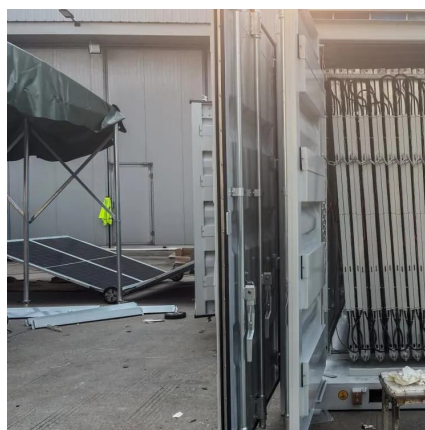
[Request Quote](#)



[Can You Use A Portable Power Station While Charging](#)

In practical terms, this means you can charge the battery from an AC wall outlet, solar panel, or car socket, while at the same time using the power station to run devices like ...

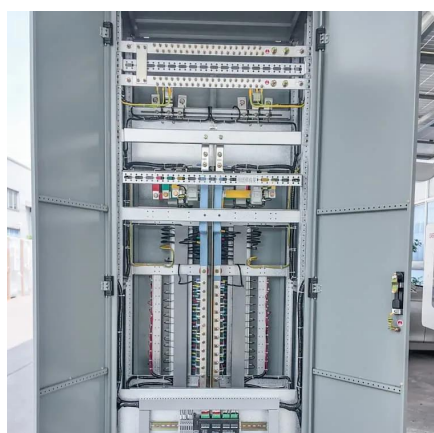
[Request Quote](#)



Charge Your Battery System

The Ecoflow Delta Pro can be charged using a standard level 2 electric vehicle charging station with the purchase of an adaptor. These stations ...

[Request Quote](#)



[Can A Portable Power Station Charge A](#)



[Car Battery?](#)

If you're in a pinch with a dead car battery and a portable power station, could you potentially charge the battery enough to start the car? Let's take a look.

[Request Quote](#)



[Can You Use A Portable Power Station While ...](#)

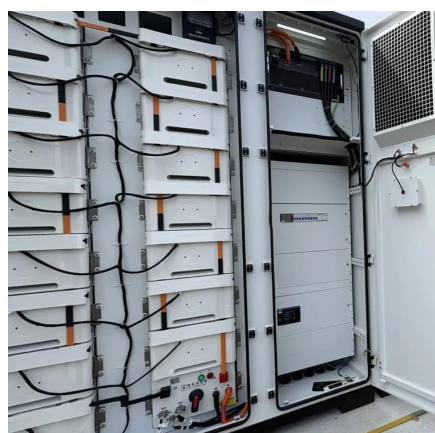
In practical terms, this means you can charge the battery from an AC wall outlet, solar panel, or car socket, while at the same time using ...

[Request Quote](#)

[4 Best Ways on How to Charge/Recharge a ...](#)

Yes, you can charge a portable power station while using it, a process known as pass-through charging. This feature allows you to ...

[Request Quote](#)



[How Does a Portable Power Station Work? A Complete Guide](#)

The portable power station's internal battery is charged using an external power source. This can be an AC outlet in the house, a solar panel, or a 12V car charger on the road.

[Request Quote](#)

[Can You Charge a Portable Power Station](#)



While Using It?

Pass-through charging is the technology that allows you to simultaneously charge your portable power station while using it to power devices.

[Request Quote](#)



Charge Your Battery System

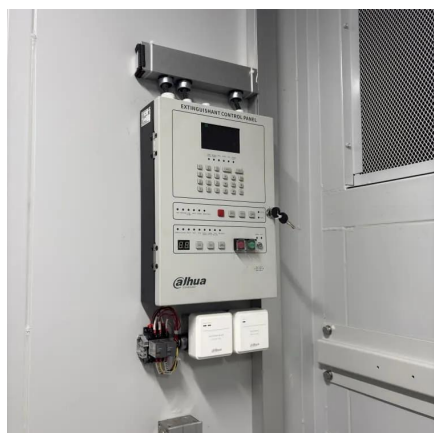
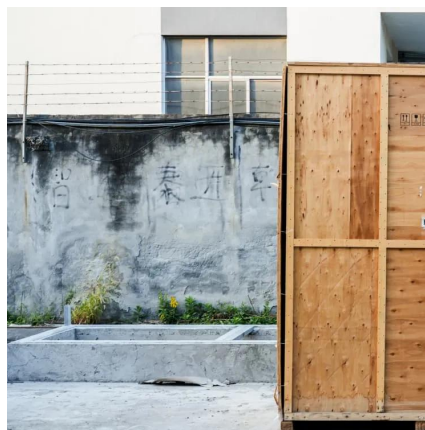
The Ecoflow Delta Pro can be charged using a standard level 2 electric vehicle charging station with the purchase of an adaptor. These stations can charge your battery to 100% in less than ...

[Request Quote](#)

Can A Portable Power Station Charge A Car Battery?

If you're in a pinch with a dead car battery and a portable power station, could you potentially charge the battery enough to start the ...

[Request Quote](#)



Can You Use A Jackery Explorer While It's Charging?

Well, Jackery does not recommend using the battery while it's charging. The reason they give in the manual is that it "will cause damage to battery life". That sentence can ...

[Request Quote](#)

How Does a Portable Power Station Work?



[A...](#)

Up to 6% cash back. The portable power station's internal battery is charged using an external power source. This can be an AC ...

[Request Quote](#)



Can a Portable Power Station Be Charged and Used at the Same ...

Some units prioritize the battery, only allowing output when the battery has sufficient charge. Others can actively direct input power to both the battery and the output ...

[Request Quote](#)



Contact Us

For catalog requests, pricing, or partnerships, please visit:

<https://energyinnovationday.pl>

Phone: +48 22 335 1273

Email: info@energyinnovationday.pl

Scan the QR code to contact us via WhatsApp.

