



Can solar panels installed on the roof bear the weight





Overview

When installing solar panels, it's essential to make sure the roof can support this additional weight without compromising its integrity. Factors such as the roof's material, age, condition, and slope play a significant role in determining whether it can withstand the extra load.

When installing solar panels, it's essential to make sure the roof can support this additional weight without compromising its integrity. Factors such as the roof's material, age, condition, and slope play a significant role in determining whether it can withstand the extra load.

Solar panel weight on a roof is a common concern for homeowners considering solar installations. This article explains typical panel weights, how those loads affect roof structures, and steps for safe installation. It guides readers through calculations, building code considerations, and when.

To understand the impact of solar panel weight on a roof, it's best to consider the structural capacity of the roof, especially its load-bearing capabilities. The weight of solar panels varies depending on the type and size of the panels. Typically, a solar panel weighs between 33 and 50 pounds per.

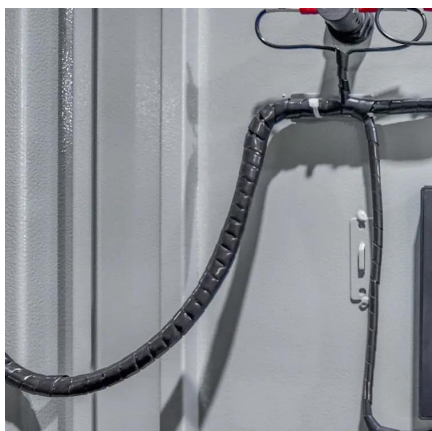
However, one common concern is the weight of solar panels on roofs and whether existing structures can handle the additional load. This article explores the weight considerations of solar panel installations, structural factors, and tips to ensure a safe and efficient setup. **How Much Do Solar.**

If you're considering installing solar panels on the roof of your home or business, one of the first things you need to do is ensure your roof can support the added weight. The roof of a modern building is often sufficiently strong to carry the weight of a solar panel installation. Nonetheless, you.

Evaluating a roof's structure, load capacity, and regulations is crucial for safe solar panel installation. Evaluating a roof's structure, load capacity, and regulations is crucial for safe solar panel installation. To effectively determine if a roof can support solar panels, a comprehensive.



Can solar panels installed on the roof bear the weight



[Understanding Roof Load Capacity for Solar ...](#)

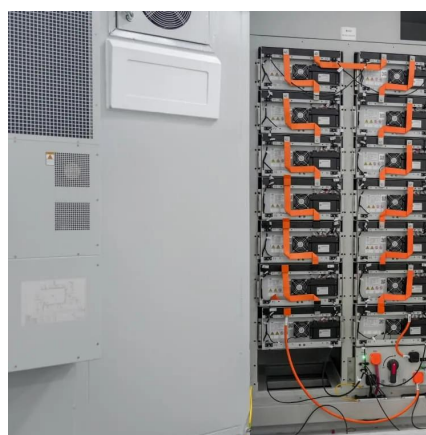
In most cases, a solar panel installation will now only increase the load on a roof by somewhere around 2 to 4 pounds per square foot. ...

[Request Quote](#)

[Weight of Solar Panels on Roof: Understanding Panel and ...](#)

As solar panels become more common on American homes and businesses, understanding how their weight impacts roof structure is essential. The weight of solar panels ...

[Request Quote](#)



[Solar Panel Weight Impact on Roof: 5 Key Factors ...](#)

When installing solar panels, it's essential to make sure the roof can support this additional weight without compromising its integrity. ...

[Request Quote](#)



How do you determine if a roof can handle the weight of solar panels?

How do you determine if a roof can handle the weight of solar panels? Evaluating a roof's structure, load capacity, and regulations is crucial for safe solar panel installation.



[Request Quote](#)



[Solar Panel Weight Impact on Roof: 5 Key Factors to Consider](#)

When installing solar panels, it's essential to make sure the roof can support this additional weight without compromising its integrity. Factors such as the roof's material, age, ...

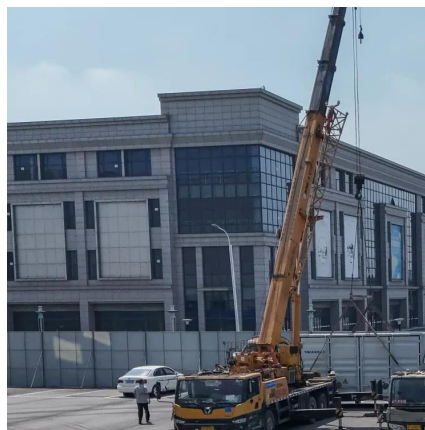
[Request Quote](#)



[Can Your Roof Support Solar Panels? Key Weight Insights](#)

It's a valid concern--after all, solar panels will be sitting up there for 25+ years. But here's the short answer: most roofs in good condition can easily support a solar system ...

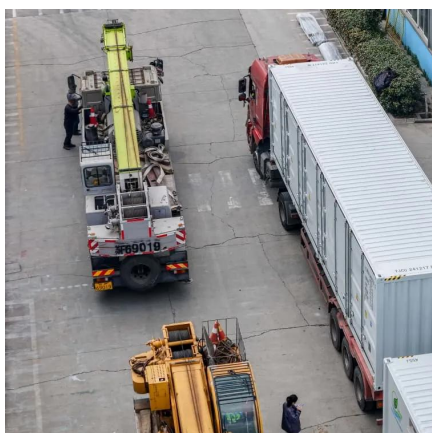
[Request Quote](#)



How do you determine if a roof can handle the weight of solar ...

How do you determine if a roof can handle the weight of solar panels? Evaluating a roof's structure, load capacity, and regulations is crucial for safe solar panel installation.

[Request Quote](#)



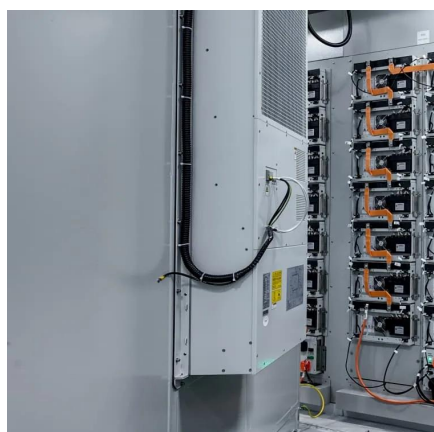
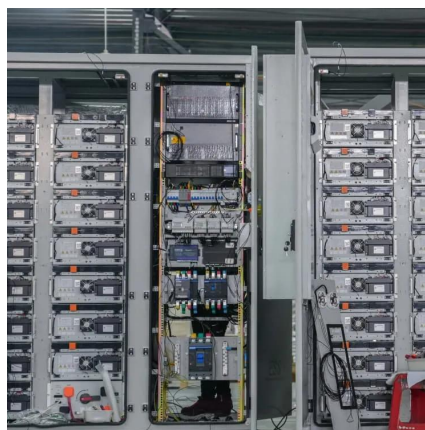
[CAN YOUR ROOF HANDLE THE WEIGHT OF](#)



[SOLAR ...](#)

Of course, a solar energy array weighs more than a pineapple. But, the weight is distributed or should be. According to the Insurance Institute for Business & Home Safety (IBHS), your roof ...

[Request Quote](#)



Weight of Solar Panels on Roof and What Homeowners Should ...

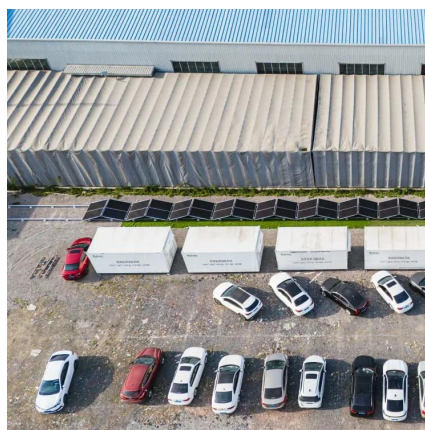
Myth: Solar panels make the roof collapse due to heavy weight. Fact: Proper structural assessments and quality installations ensure roofs handle the load safely.

[Request Quote](#)

[Understanding Roof Load Capacity for Solar Panels](#)

In most cases, a solar panel installation will now only increase the load on a roof by somewhere around 2 to 4 pounds per square foot. The number of solar panels you install ...

[Request Quote](#)



[Weight of Solar Panels on Roof: What Homeowners Need to Know](#)

Solar panel weight on a roof is a common concern for homeowners considering solar installations. This article explains typical panel weights, how those loads affect roof ...

[Request Quote](#)

Weight of Solar Panels on Roof:



Understanding Mass, Roof Load, ...

Solar panels add valuable energy to homes, but their weight matters for roof integrity. This article explains typical panel weights, how mounting hardware contributes to ...

[Request Quote](#)



Weight of Solar Panels on Roof: A Comprehensive Guide for ...

Solar installations impose both static and dynamic loads on the roof. The added weight can affect attic ventilation, insulation performance, and roof longevity if not properly ...

[Request Quote](#)



Contact Us

For catalog requests, pricing, or partnerships, please visit:

<https://energyinnovationday.pl>

Phone: +48 22 335 1273

Email: info@energyinnovationday.pl

Scan the QR code to contact us via WhatsApp.

