



Battery pack bms





Overview

A battery management system (BMS) is any electronic system that manages a rechargeable battery (cell or battery pack) by facilitating the safe usage and a long life of the battery in practical scenarios while monitoring and estimating its various states (such as state of health and state of charge), calculating secondary data, reporting that data, controlling its environment, authenticating. FunctionsA BMS may monitor the state of the battery as represented by various items, such as:

- : total voltage, voltages of individual cells, or voltage of periodic taps
- : average temperature, coolant intake temp.

BMS technology varies in complexity and performance:

- Simple passive regulators achieve balancing across batteries or cells by bypassing the charging current when the cell's voltage is high.



Battery pack bms



[What Is a Battery Management System \(BMS\)?](#)

A Battery Management System (BMS) is an essential component in modern battery-powered applications, responsible for monitoring, protecting, and optimizing the ...

[Request Quote](#)

Low battery charge message

The low battery charge message relates to the main battery. On vehicles with stop/start systems and intelligent alternators, the vehicle battery is designed to operate at ...

[Request Quote](#)



[Battery Management Systems for Lithium-Ion Packs](#)

A Battery Management System (BMS) is essential for the efficient use and longevity of lithium-ion battery packs. It guarantees safety and performance by monitoring key aspects like charge, ...

[Request Quote](#)



Household Battery Recycling

Household battery recycling locations Lead-acid batteries, or "automotive type batteries," are banned from disposal. Consumers may bring lead-acid batteries to any Wisconsin retailer that ...

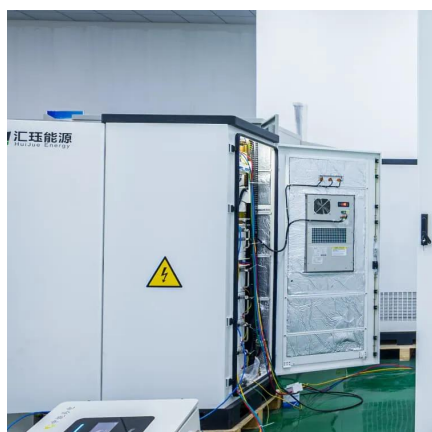
[Request Quote](#)



[Battery Management System \(BMS\) Detailed ...](#)

Battery Management System (BMS) is the "intelligent manager" of modern battery packs, widely used in fields such as electric ...

[Request Quote](#)



[What is a Battery Management System \(BMS\)? - ...](#)

A BMS monitors the temperatures across the pack, and open and closes various valves to maintain the temperature of the overall battery within a ...

[Request Quote](#)



New Battery

So I think the time has come to replace the main battery. Its the original Volvo 70ah EFB battery that was on the car from new in 2016.. The car starts fine but I keep getting the ...

[Request Quote](#)

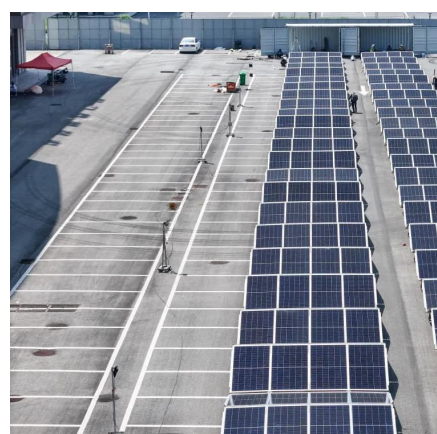


Battery issues



I've had both batteries replaced (with the correct models), done a 100 mile trip, overnight smart battery charge, charging voltage is fine, system messages cleared but I am ...

[Request Quote](#)



[Battery Management System \(BMS\) Detailed Explanation: ...](#)

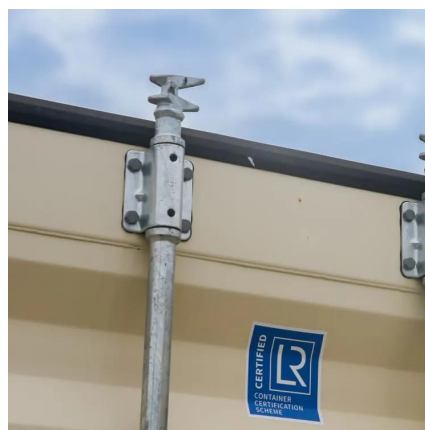
Battery Management System (BMS) is the "intelligent manager" of modern battery packs, widely used in fields such as electric vehicles, energy storage stations, and consumer ...

[Request Quote](#)

[Low battery charge error , Volvo V40 Forums](#)

Hello everyone, I just bought my first car, a 2014 Volvo V40 T3, and a warning appears on the dashboard that says 'low battery charge.' The car is recently

[Request Quote](#)



Main Battery Change

Going to change the service battery in my 15 V40cc D2. Anything I need to be ware of or look out for ??

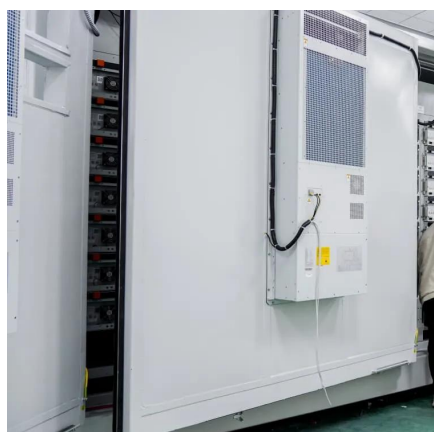
[Request Quote](#)

how to choose bms for battery pack



As the "guardian" and "smart housekeeper" of the battery pack, the performance of the battery management system (BMS) directly affects the safety, reliability and service life of ...

[Request Quote](#)



Which battery? D3 start/stop

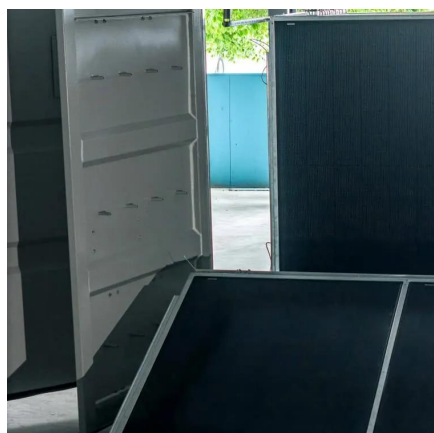
I'm having a few issues with my v40 which include the air con only blowing cold out one side and warped disks, the immobiliser cut in at 50mph once (but I think that was key ...

[Request Quote](#)

EFB or AGM Upgrade

Hi, Main battery needs changed, currently has the OEM EFB battery. Thinking of upgrading to an AGM Battery, has anyone done this and had any issues??

[Request Quote](#)



[What Is BMS in a Battery Pack? And What Does It Do](#)

A battery pack's battery management system (BMS) is arguably its most critical component. As the "brain" of the battery, the BMS continuously monitors and controls key ...

[Request Quote](#)

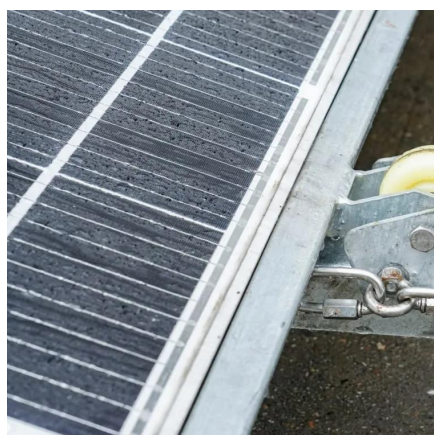
What is a Battery Management



System? Complete Guide to BMS ...

A Battery Management System (BMS) is an electronic control unit that monitors and manages rechargeable battery packs to ensure safe operation, optimal performance, and ...

[Request Quote](#)



What is a Battery Management System (BMS)? Essential Guide ...

A Battery Management System (BMS) safeguards lithium-ion batteries by monitoring voltage, current, and temperature, preventing overcharge, discharge, and thermal ...

[Request Quote](#)

[Battery Management Systems \(BMS\): A Complete ...](#)

A BMS plays a crucial role in ensuring the optimal performance, safety, and longevity of battery packs. This comprehensive ...

[Request Quote](#)



Battery management system

A battery management system (BMS) is any electronic system that manages a rechargeable battery (cell or battery pack) by facilitating the safe usage and a long life of the battery in ...

[Request Quote](#)

[Battery Management Systems \(BMS\): A](#)



[Complete Guide](#)

A BMS plays a crucial role in ensuring the optimal performance, safety, and longevity of battery packs. This comprehensive guide will cover the fundamentals of BMS, its ...

[Request Quote](#)



[Battery replacement question. , Volvo V40 Forums](#)

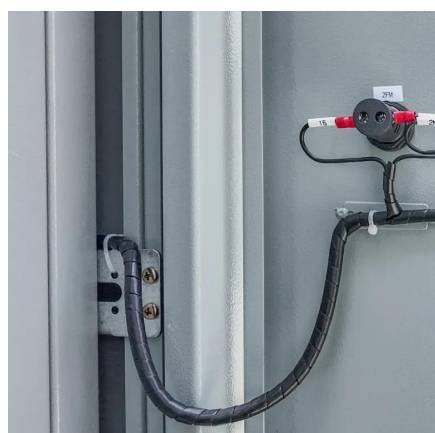
The main battery is the one to look at. The secondary battery is only connected to the car by a relay for a fraction of a second during an engine restart from a stop/start event, ...

[Request Quote](#)

[What is a Battery Management System \(BMS\)? - How it Works](#)

A BMS monitors the temperatures across the pack, and open and closes various valves to maintain the temperature of the overall battery within a narrow temperature range to ensure ...

[Request Quote](#)



[What is a Battery Management System? Complete ...](#)

A Battery Management System (BMS) is an electronic control unit that monitors and manages rechargeable battery packs to ensure ...

[Request Quote](#)

Battery



How do you charge the small battery - I charge the main battery to show full, but the auxiliary battery loses charge if listening to the radio when stationary. podger

[Request Quote](#)



[What is a Battery Management System \(BMS\)?](#)

A Battery Management System (BMS) safeguards lithium-ion batteries by monitoring voltage, current, and temperature, preventing ...

[Request Quote](#)



Contact Us

For catalog requests, pricing, or partnerships, please visit:

<https://energyinnovationday.pl>

Phone: +48 22 335 1273

Email: info@energyinnovationday.pl

Scan the QR code to contact us via WhatsApp.

