



Battery BMS voltage





Battery BMS voltage



[Working Principles and Core Functions of Battery ...](#)

- Continuously monitors cell voltage (typically 4.2V-4.3V for Li-ion) - Triggers MOSFET cutoff when voltage exceeds safety ...

[Request Quote](#)

[How BMS Works on Batteries in EV: Boosting Performance, ...](#)

In this blog, we'll explore how the BMS works across different battery types, from balancing cell voltages to managing charge cycles, to ensure your EV runs smoothly and ...

[Request Quote](#)



What Is BMS on a Lithium Battery? A Complete Guide to Its Role

Every cell in a lithium battery has a safe voltage range--typically 2.5-4.2 V for lithium-ion and 2.0-3.65 V for LiFePO4. The BMS ensures no cell goes over or under these ...

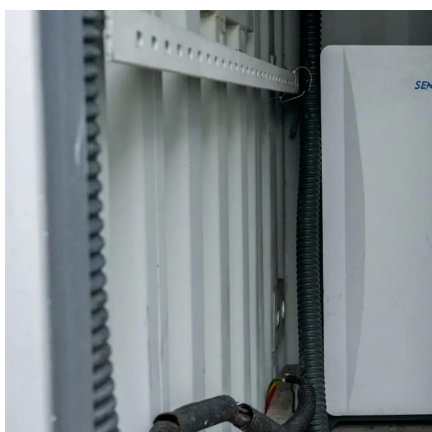
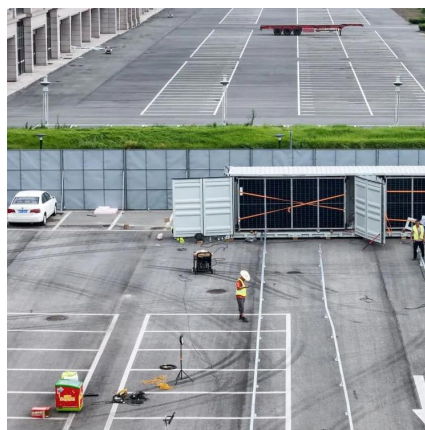
[Request Quote](#)

[How a Battery Management System \(BMS\)](#)

...

In some low-voltage applications (like IoT sensors, e-bikes, or DIY battery projects), BMS designers use a voltage divider circuit to ...

[Request Quote](#)



[Battery Management System \(BMS\) Detailed ...](#)

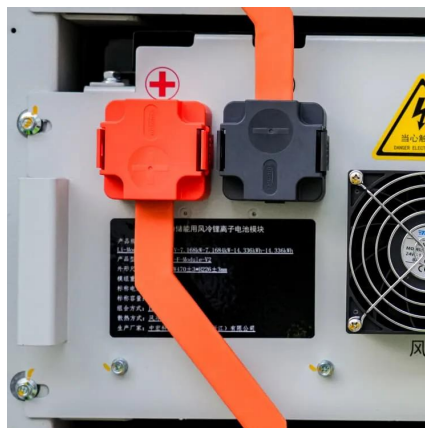
Battery Management System (BMS) is the "intelligent manager" of modern battery packs, widely used in fields such as electric ...

[Request Quote](#)

Battery management system

In order to maximize the battery's capacity, and to prevent localized under-charging or over-charging, the BMS may actively ensure that all the cells that compose the battery are kept at ...

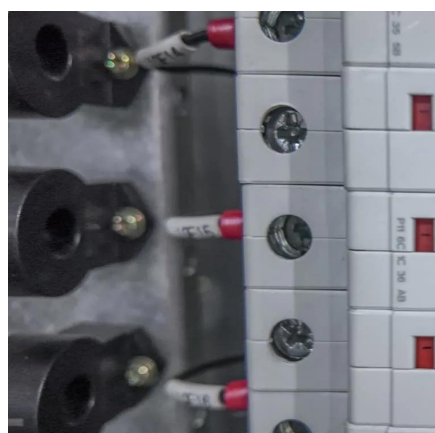
[Request Quote](#)



[What Is BMS on a Lithium Battery? A Complete ...](#)

Every cell in a lithium battery has a safe voltage range--typically 2.5-4.2 V for lithium-ion and 2.0-3.65 V for LiFePO4. ...

[Request Quote](#)



[Battery Management Systems \(BMS\): A](#)



[Complete ...](#)

In this article, we will discuss battery management systems, their purpose, architecture, design considerations for BMS, and future ...

[Request Quote](#)



[Learn about BMS and Battery Pack: Cell Voltage ...](#)

In this article, we plan to use a simple project to let you understand the basics of how a BMS monitors cell voltage so that you ...

[Request Quote](#)

What is a Battery Management System (BMS)? Essential Guide ...

A BMS keeps track of voltage, current, and temperature to keep batteries running safely. These smart systems can handle battery packs from less than 100V up to 800V, and ...

[Request Quote](#)



[Working Principles and Core Functions of Battery BMS](#)

- Continuously monitors cell voltage (typically 4.2V-4.3V for Li-ion)
- Triggers MOSFET cutoff when voltage exceeds safety thresholds.
- Prevents lithium plating and ...

[Request Quote](#)

[Battery Management System \(BMS\)](#)



[Detailed Explanation: ...](#)

Battery Management System (BMS) is the "intelligent manager" of modern battery packs, widely used in fields such as electric vehicles, energy storage stations, and consumer ...

[Request Quote](#)



[How to Detect and Keep Types of BMS Voltage for ...](#)

The innovative battery voltage state detection method in the BMS system provided by MOKOEnergy can not only conveniently monitor ...

[Request Quote](#)

How to Detect and Keep Types of BMS Voltage for Your Battery ...

The innovative battery voltage state detection method in the BMS system provided by MOKOEnergy can not only conveniently monitor whether there is abnormal battery voltage, ...

[Request Quote](#)



[Battery Management Systems \(BMS\): A Complete Guide](#)

In this article, we will discuss battery management systems, their purpose, architecture, design considerations for BMS, and future trends. Ask questions if you have any ...

[Request Quote](#)

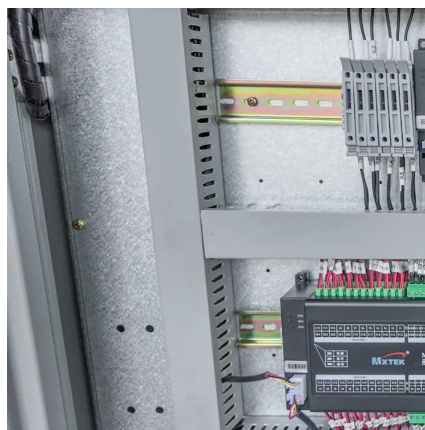
[Learn about BMS and Battery Pack: Cell](#)



[Voltage Monitoring](#)

In this article, we plan to use a simple project to let you understand the basics of how a BMS monitors cell voltage so that you can step forward to design PCBs for lithium ...

[Request Quote](#)



[How a Battery Management System \(BMS\) Measures Voltage ...](#)

In some low-voltage applications (like IoT sensors, e-bikes, or DIY battery projects), BMS designers use a voltage divider circuit to measure the battery voltage. This is a ...

[Request Quote](#)



Contact Us

For catalog requests, pricing, or partnerships, please visit:

<https://energyinnovationday.pl>

Phone: +48 22 335 1273

Email: info@energyinnovationday.pl

Scan the QR code to contact us via WhatsApp.

