



# Base station power rectifier module configuration





## Overview

---

This manual (LBI-38775) contains information for the MASTR III Base Station, including application information, cable diagrams and parts list for the cabinet hardware. For additional information refer to the following manuals: MANUAL NUMBER TITLE COMMENTS.

This manual (LBI-38775) contains information for the MASTR III Base Station, including application information, cable diagrams and parts list for the cabinet hardware. For additional information refer to the following manuals: MANUAL NUMBER TITLE COMMENTS.

Refer to other local practices or building codes as applicable for the correct methods, tools, and materials to be used in performing procedures not specifically described in this document. The products covered by this instruction manual are manufactured and/or sold by Vertiv. This document is the.

A custom rectifier module offers a precise, scalable solution for these evolving power requirements in outdoor, indoor, and shared cabinet settings. 5G base stations need much more power than 4G, requiring upgraded power solutions to handle higher energy demands safely and efficiently. Choosing the.

This article focuses on the three parts of switching power supply: "types and usage scenarios, configuration principles and algorithms, and daily management and maintenance". Part I Types and usage scenarios 1. Combined switching power supply 2. Embedded switching power supply 3. Wall-mounted.

The 19" 1U SLIMLINE Carrier can accommodate either five 48 V and 2 000 W rectifier modules (SLIMLINE 2000 NG) combined with a SLIMLINE Controller or six rectifier modules. The 19" 1U SLIMLINE Carrier can accommodate either four rectifier modules of 48 V and 3 000 W each (SLIMLINE 3000 NG) combined.

The Power Rectifier's ability to hold up to three power modules makes it easy to swap out an existing power module or add a new one as necessary for increased DC power. The Power Rectifier used in your deployment will have one power module. Each MCPA has two power connections: +27V DC (red) and the.

- The means of disconnecting power from a station cabinet is the cabinet power



supply plug. • When conducting repair/maintenance, disconnect the cabinet power supply plug from the AC source. • In European applications, equipment must be installed in a closed cabinet. • Only replace components with.



## Base station power rectifier module configuration



### [3900 & 5900 Series Base Station Configuration Principles](#)

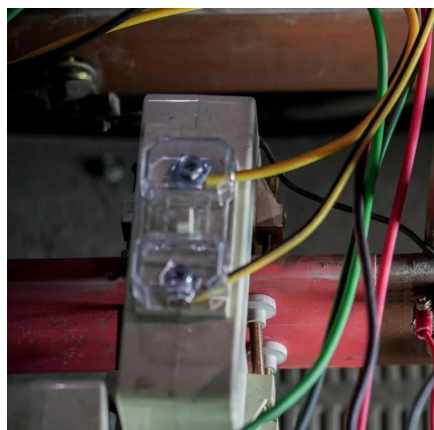
1.2.3.5.45 AAU5246 Configurations Added the AAU5246. whose model is WD7MQTQEKAB0.

[Request Quote](#)

### Rectifier Module

When multiple rectifiers are operating in parallel and the current sharing imbalance among them is greater than 20%, check if the rectifier is properly seated in the Power/Distribution Shelf.

[Request Quote](#)



### [Vanu Anywave® BSS Operator Guide --](#)

Each MCPA has two power connections: +27V DC (red) and the Return (black) to the rectifier being used in the system. Each power module in the rectifier requires its own 120 Volt power ...

[Request Quote](#)

### [Telecom Power Supplies , Rectifiers , Inverters](#)

Due to the high degree of modularisation, it is possible for us to plan, configure and deliver customised telecom power supply systems at very short notice.



[Request Quote](#)



### [GPE48150A, Telecom Power System/Base Station Rectifier...](#)

The GPE48150A embedded power system consists of the power distribution frame, monitoring module and rectifier module. The whole system is of high reliability and performance, and can ...

[Request Quote](#)

### [5G Base Station Power Upgrade: Custom Rectifier Module ...](#)

Upgrade 5G base station power in outdoor, indoor, and shared cabinets with custom rectifier module solutions for efficient, scalable, and reliable performance.

[Request Quote](#)



### [Management and maintenance of base station ...](#)

This article focuses on the three parts of switching power supply: "types and usage scenarios, configuration principles and ...

[Request Quote](#)

## **MASTR III Base Station**



o The means of disconnecting power from a station cabinet is the cabinet power supply plug. o When conducting repair/maintenance, disconnect the cabinet power supply plug from the AC ...

[Request Quote](#)



### Management and maintenance of base station switching power ...

This article focuses on the three parts of switching power supply: "types and usage scenarios, configuration principles and algorithms, and daily management and maintenance".

[Request Quote](#)



### Baseband Unit (BBU)

Compatibility for integrating base transceiver stations between different vendor equipment in O-RAN configurations. Scalability in ensuring that the BBU can scale to support multiple types of ...

[Request Quote](#)



### Telecom Base Station Power System Solution

Good maintainability: Supports automation, intelligence and modular management, which is convenient for fault diagnosis and system maintenance.

[Request Quote](#)



## Contact Us

---

For catalog requests, pricing, or partnerships, please visit:

<https://energyinnovationday.pl>

Phone: +48 22 335 1273

Email: [info@energyinnovationday.pl](mailto:info@energyinnovationday.pl)

Scan the QR code to contact us via WhatsApp.

