



# Base station communication bridge installation





## Overview

---

Installing a Base Transceiver Station (BTS) is a critical step in building mobile communication networks. Here's a step-by-step guide to the process: 1. Site Acquisition and Survey Objective: Select and acquire a suitable location for the BTS. Activities: Identify.

Installing a Base Transceiver Station (BTS) is a critical step in building mobile communication networks. Here's a step-by-step guide to the process: 1. Site Acquisition and Survey Objective: Select and acquire a suitable location for the BTS. Activities: Identify.

For setups with a dedicated communication equipment room, these devices are arranged either on integrated racks or standalone cabinets, forming a complete, functional system. 1. Main Base Station Equipment Often referred to as the brain center, this includes: Baseband Unit (BBU): Handles baseband.

Installing a Base Transceiver Station (BTS) is a critical step in building mobile communication networks. Here's a step-by-step guide to the process: 1. Site Acquisition and Survey Objective: Select and acquire a suitable location for the BTS. Activities: Identify coverage gaps or expansion areas.

There are several types of telecom sites that can be set up using the different tower designs. The type used depends on the location of the site and the demands of the network it is integrated into. Due to their prominence in the landscape, large tower installations often take the form of remote.

enna are installed in different locations. In such cases, you must use the Antenna Relocation Kit (model 900914), sold separately, which includes a 900 MHz relocation an e area (such as a city or a large campus). The Base Station includes a Gateway, a secondary amplifier to be pole-mounted below.

A base station represents an access point for a wireless device to communicate within its coverage area. It usually connects the device to other networks or devices through a dedicated high bandwidth wire of fiber optic connection. Base stations typically have a transceiver, capable of sending and.

In radio communications, a base station is a wireless communications station



installed at a fixed location and used to communicate as part of one of the following: a wireless telephone system such as cellular CDMA or GSM cell site. Base stations use RF power amplifiers (radio-frequency power).



## Base station communication bridge installation



### Base station

In radio communications, a base station is a wireless communications station installed at a fixed location and used to communicate as part of one of the following: a push-to-talk two-way radio

...

[Request Quote](#)

### Base Stations

Backhaul Connection: The backhaul connection links the base station to the core network in the mobile communication system. It provides for the interchange of data between ...

[Request Quote](#)



### [Process of Installing a Base Transceiver Station \(BTS\)](#)

Installing a Base Transceiver Station (BTS) is a critical step in building mobile communication networks. Here's a step-by-step guide to the process:

[Request Quote](#)



### Complete Guide to 5G Base Station Construction , Key Steps, ...

Explore how 5G base stations are built--from site planning and cabinet installation to power systems and cooling solutions. Learn the essential components, technologies, and ...



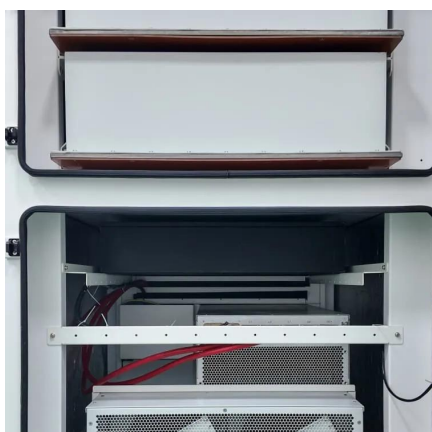
[Request Quote](#)



## Base station

In radio communications, a base station is a wireless communications station installed at a fixed location and used to communicate as part of one of the ...

[Request Quote](#)



## Gateway and Base Station Installation Guide

Installing a Gateway or Base Station y or Base Station requires the same steps. The only difference is for a gateway using the antenna mounted to the enclosure

[Request Quote](#)



## Process of Installing a Base Transceiver Station ...

Installing a Base Transceiver Station (BTS) is a critical step in building mobile communication networks. Here's a step-by-step guide to ...

[Request Quote](#)

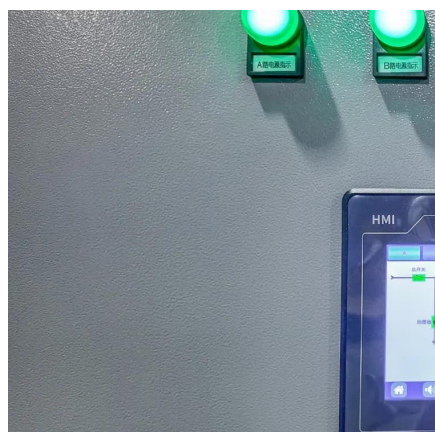
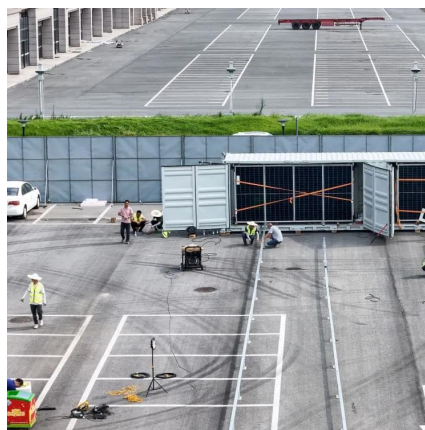


## Common ways to set up a base station



Before you set up a base station, please see Base station operation guidelines. For construction applications, where machine and site positioning operations using GNSS will be carried out ...

[Request Quote](#)



## Ensemble Communications LMDS Base Station Transceiver : Install ...

Make connections to the base station using crimp type lugs. Use the provided #10 screw to route the -48 VDC power and return conductors to the Power Distribution Frame (PDF) on the power ...

[Request Quote](#)

## [Base Station Installation & Maintenance](#)

To ensure stable communication between a base station and connect with the stability of mobile devices, it is necessary to check radio communication performance and eliminate radio wave ...

[Request Quote](#)



## [Complete Guide to 5G Base Station Construction](#)

Explore how 5G base stations are built--from site planning and cabinet installation to power systems and cooling solutions. Learn the ...

[Request Quote](#)

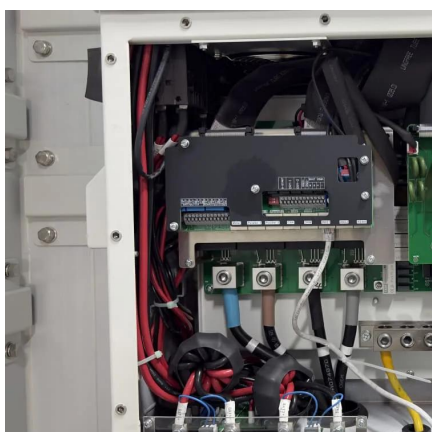
## [Breaking Down Base Stations - A Guide to](#)



## [Cellular Sites](#)

This equipment can be installed remotely to bridge gaps in new network infrastructure or as a temporary fix for disabled towers. A mobile tower can also become a ...

[Request Quote](#)



## [Ensemble Communications LMDS Base Station Transceiver : ...](#)

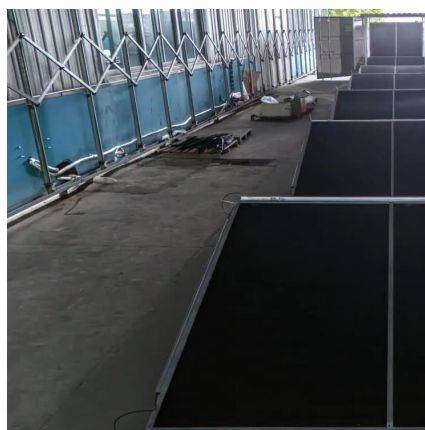
Make connections to the base station using crimp type lugs. Use the provided #10 screw to route the -48 VDC power and return conductors to the Power Distribution Frame (PDF) on the power ...

[Request Quote](#)

## **Base Station Implementation of Interoperability and Common ...**

In order to facilitate interoperable communications and to ensure that public safety has the necessary common channels available throughout New York State for calling and ...

[Request Quote](#)



## [Common ways to set up a base station](#)

Before you set up a base station, please see Base station operation guidelines. For construction applications, where machine and site ...

[Request Quote](#)



## **Base Stations**



Backhaul Connection: The backhaul connection links the base station to the core network in the mobile communication system. It ...

[Request Quote](#)





## Contact Us

---

For catalog requests, pricing, or partnerships, please visit:

<https://energyinnovationday.pl>

Phone: +48 22 335 1273

Email: [info@energyinnovationday.pl](mailto:info@energyinnovationday.pl)

Scan the QR code to contact us via WhatsApp.

