



# Are 5G base stations divided by communication operators





## Overview

---

5G is the fifth generation of cellular network technology and the successor to 4G. First deployed in 2019, its technical standards are developed by the 3rd Generation Partnership Project (3GPP) in cooperation with the ITU's IMT-2020 program. 5G networks divide coverage areas into smaller zones called cells, enabling devices to connect to local base stations via radio. Each station con. HistoryIn 2008, NASA and the conducted nanosatellite.

Small cells are low-power radio nodes that extend network capacity in dense or indoor areas. They operate over short distances, typically a few dozen to a few hundred metres, and are used to maintain coverage for mmWav.

The 5G core (5GC) is a service-oriented, software-defined system that separates control and user planes and supports flexible deployment. It replaces the 4G with modular, software-ba.



## Are 5G base stations divided by communication operators



### [Unveiling the 5G Base Station: The Backbone of Next-Gen ...](#)

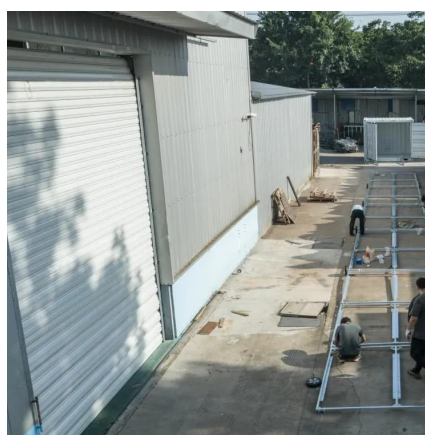
5G base stations are the critical infrastructure that enables the seamless transmission of data between devices and the core network.

[Request Quote](#)

### [What is 5G base station architecture?](#)

In 5G network planning, cellular operators have two options to consider when transitioning from 4G legacy core to 5G: non-standalone ...

[Request Quote](#)



### [What Is a Base Station? Exploring the Core of 5G Networks and ...](#)

Receiving and transmitting signals: The base station is both the transmitter and receiver of mobile phone signals. Network access: It converts wireless signals ...

[Request Quote](#)

## 5G Base Station Architecture

The Base Station cabinet is a single unit that includes both the RF functions and the baseband processing functions. The antenna ...

[Request Quote](#)



## [Cellular Networks, Cells, and Base Stations -- EITC](#)

A cell is the geographic area that is covered by a single base station in a cellular network. A network for wireless communications is comprised of a large number of base ...

[Request Quote](#)

## 5G Base Station Architecture

The Base Station cabinet is a single unit that includes both the RF functions and the baseband processing functions. The antenna subsystem connects with the antenna and ...

[Request Quote](#)



## [What is 5g base station architecture](#)

A 5G base station, also known as a gNodeB (gNB), is a critical component of the 5G Radio Access Network (RAN). It facilitates wireless communication between user equipment (UE) ...

[Request Quote](#)



## [Chapter 3: Basic Architecture -- 5G Mobile](#)



...

The first is that the eNB (which we will refer to as the Base Station from here on) has an analog component (depicted by an antenna) and a digital

...

[Request Quote](#)



### [Types of 5G NR Base Stations: A Comprehensive ...](#)

Understanding these base stations is crucial for network planners, engineers, and businesses looking to optimize connectivity. ...

[Request Quote](#)



### [What Is a Base Station? Exploring the Core of 5G ...](#)

Receiving and transmitting signals: The base station is both the transmitter and receiver of mobile phone signals. Network access: It ...

[Request Quote](#)



### [Types of 5G NR Base Stations: A Comprehensive Overview](#)

Understanding these base stations is crucial for network planners, engineers, and businesses looking to optimize connectivity. This article provides a detailed overview of the ...

[Request Quote](#)



## 5g base station architecture



Here, I'll explain the technical details of a typical 5G base station architecture: Radio Access Network (RAN): The RAN is responsible for connecting user devices to the core ...

[Request Quote](#)



### [What is 5G base station architecture?](#)

In 5G network planning, cellular operators have two options to consider when transitioning from 4G legacy core to 5G: non-standalone (NSA) or standalone (SA) architecture.

[Request Quote](#)

### [Unveiling the 5G Base Station: The Backbone of ...](#)

5G base stations are the critical infrastructure that enables the seamless transmission of data between devices and the core network.

[Request Quote](#)



## 5G

5G is the fifth generation of cellular network technology and the successor to 4G. First deployed in 2019, [1] its technical standards are developed by the 3rd Generation Partnership Project ...

[Request Quote](#)

## Chapter 3: Basic Architecture -- 5G



## Mobile Networks: A Systems ...

The first is that the eNB (which we will refer to as the Base Station from here on) has an analog component (depicted by an antenna) and a digital component (depicted by a processor).

[Request Quote](#)





## Contact Us

---

For catalog requests, pricing, or partnerships, please visit:

<https://energyinnovationday.pl>

Phone: +48 22 335 1273

Email: [info@energyinnovationday.pl](mailto:info@energyinnovationday.pl)

Scan the QR code to contact us via WhatsApp.

