



500kw energy storage equals how many kilowatt-hours of electricity





Overview

To calculate energy consumption in kWh, multiply the power in kW by the duration in hours: $\text{Energy (kWh)} = \text{Power (kW)} \times \text{Time (hours)}$ For example, operating a 2 kW appliance for 3 hours results in 6.

To calculate energy consumption in kWh, multiply the power in kW by the duration in hours: $\text{Energy (kWh)} = \text{Power (kW)} \times \text{Time (hours)}$ For example, operating a 2 kW appliance for 3 hours results in 6.

Power in kilowatts (kW) to energy in kilowatt-hours (kWh) calculator and calculation. Enter the power in kilowatts, consumption time period in hours and press the Calculate button: kWh to kW calculator ► The energy E in kilowatt-hours (kWh) is equal to the power P in kilowatts (kW), times the time.

Kilowatt-hours, abbreviated as kWh or kW·h, are a measure of energy used. One kilowatt-hour is equal to one kilowatt of power consumed over a one-hour time period. To convert power in kW to energy in kWh, use the formula below. $E \text{ (kWh)} = P \text{ (kW)} \times T \text{ (hrs)}$ The energy E in kilowatt-hours is equal to.

Convert kilowatts (kW) to kilowatt-hours (kWh) by multiplying by time. Use this tool to estimate energy usage and electrical costs. Kilowatts (kW) and kilowatt-hours (kWh) are both essential units in the world of electricity, but they represent different concepts: kW (Kilowatt): A unit of power. It.

Understanding the conversion between kilowatts (kW) and kilowatt-hours (kWh) is essential for accurately assessing energy consumption and managing electricity costs. A kilowatt measures the rate of power usage, while a kilowatt-hour represents the total energy consumed over time. To calculate.

If you're shopping around for solar panels or battery storage for your home, you're undoubtedly come across the terms 'kilowatt' (abbreviated as kW) and kilowatt-hour (kWh). These terms might be a bit confusing at first, so we've written this article to explain these terms and make them easy to.

To put it in perspective, a kilowatt is equivalent to 1,000 watts. It measures how



much power electrical equipment uses or produces. On the other hand, a kilowatt-hour measures the energy consumption of an electrical device every hour. This is particularly important for working out energy costs for. How to calculate energy in kilowatt-hours (kWh)?

Energy in kilowatt-hours (kWh) to power in kilowatts (kW) calculator and calculation. Enter the energy in kilowatt-hours, consumption time period in hours and press the Calculate button: kW to kWh calculator ► The power P in kilowatts (kW) is equal to the energy E in kilowatt-hours (kWh), divided by the consumption time period t in hours (h):.

How to calculate power in kilowatts (kW)?

Power in kilowatts (kW) to energy in kilowatt-hours (kWh) calculator and calculation. Enter the power in kilowatts, consumption time period in hours and press the Calculate button: kWh to kW calculator ► The energy E in kilowatt-hours (kWh) is equal to the power P in kilowatts (kW), times the time period t in hours (h):.

How much does a kilowatt cost per kWh?

It depends on your utility rate. In the U.S., it typically costs between \$0.10-\$0.25 per kWh. Easily convert kilowatts (kW) to kilowatt-hours (kWh) using this calculator. Understand the difference between power and energy, and how to estimate energy consumption.

How many kWh in 25 kW?

So, 25 kW of power consumed over 4 hours is equal to 100 kWh of energy. Do you want to convert kWh to kW?

Table showing the energy in kilowatt-hours to the power in kilowatts for various lengths of time.



500kw energy storage equals how many kilowatt-hours of electricity



kW to kWh Calculator

Thankfully, this isn't true of converting kilowatts (kW) to kilowatt hours (kWh). Solar beginners often encounter difficulties with these calculations and ...

[Request Quote](#)

[kW vs kWh in solar & battery storage . Solar Choice](#)

Similarly, the amount of energy that a battery can store is often referred to in terms of kWh. As a simple example, if a solar system continuously produces 1kW of power for an ...

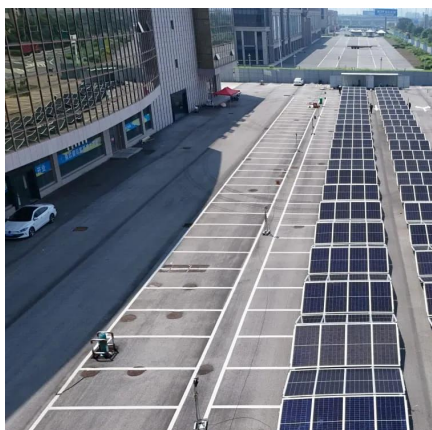
[Request Quote](#)



[kW to kWh Calculator , Convert Kilowatts to Kilowatt-hours](#)

Easily convert kilowatts (kW) to kilowatt-hours (kWh) using this calculator. Understand the difference between power and energy, and how to estimate energy consumption.

[Request Quote](#)



[Kilowatts \(kW\) to Kilowatt-Hours \(kWh\) Conversion Calculator](#)

Convert kilowatts to kilowatt-hours with our kW to kWh calculator, plus learn the formula used for kW to kWh conversions.

[Request Quote](#)



kWh to kW conversion calculator

The power P in kilowatts (kW) is equal to the energy E in kilowatt-hours (kWh), divided by the consumption time period t in hours (h): kWh to kW calculation . Kilowatt-hours (kWh) to ...

[Request Quote](#)



kW to kWh conversion calculator

Power in kilowatts (kW) to energy in kilowatt-hours (kWh) calculator and calculation. Enter the power in kilowatts, consumption time period in hours and press the Calculate button:

[Request Quote](#)



kW to kWh conversion calculator

One kilowatt-hour is the energy used when a device running at 1 kW operates for 1 hour: A 1 kW device running for 1 hour consumes 1 kWh of energy. A 2 kW heater running for 3 hours ...

[Request Quote](#)



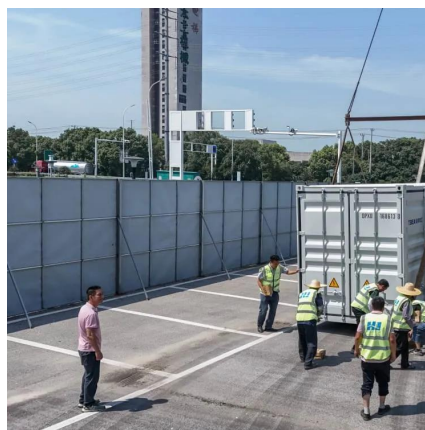
[What Is A Kilowatt-hour \(kWh\) And What](#)



[Can It ...](#)

It's one kilowatt of power (1000 watts) used for one hour. It's abbreviated as kWh. It's not the number of kilowatts you're using in an hour, even though ...

[Request Quote](#)



KWH Calculator

Similarly, the amount of energy that a battery can store is often referred to in terms of kWh. As a simple example, if a solar system ...

[Request Quote](#)

kW to kWh calculator

Understanding the conversion between kilowatts (kW) and kilowatt-hours (kWh) is essential for accurately assessing energy consumption and managing electricity costs. A kilowatt measures ...

[Request Quote](#)



KWH Calculator

To calculate KWH, divide that wattage by 1000, then multiply by the total time in hours. What is KWH? KWH is short for kilowatt hour, which is a unit of measure of energy that ...

[Request Quote](#)

[What Is A Kilowatt-hour \(kWh\) And What](#)



[Can It Power?](#)

It's one kilowatt of power (1000 watts) used for one hour. It's abbreviated as kWh. It's not the number of kilowatts you're using in an hour, even though that seems to make sense. Think of it ...

[Request Quote](#)



kW to kWh Calculator

Thankfully, this isn't true of converting kilowatts (kW) to kilowatt hours (kWh). Solar beginners often encounter difficulties with these calculations and aren't provided with the correct ...

[Request Quote](#)



Contact Us

For catalog requests, pricing, or partnerships, please visit:

<https://energyinnovationday.pl>

Phone: +48 22 335 1273

Email: info@energyinnovationday.pl

Scan the QR code to contact us via WhatsApp.

