



20 feet outdoor energy storage container parameters





Overview

The energy storage battery system adopts 1500V non-walk-in container design, and the box integrates energy storage battery clusters, DC convergence cabinets, AC power distribution cabinets, temperature control system, automatic fire-fighting system, lighting system and so on.

The energy storage battery system adopts 1500V non-walk-in container design, and the box integrates energy storage battery clusters, DC convergence cabinets, AC power distribution cabinets, temperature control system, automatic fire-fighting system, lighting system and so on.

closure Ra r Sunspec .

The standardized 20-foot container system can be configured with 1075kWh/500kW energy storage system. The standardized and prefabricated safety hazards caused by local installation differences and management risks. It consumption, etc., and ensures the normal operation of the power system.

The energy storage battery system adopts 1500V non-walk-in container design, and the box integrates energy storage battery clusters, DC convergence cabinets, AC power distribution cabinets, temperature control system, automatic fire-fighting system, lighting system and so on. The total capacity is.

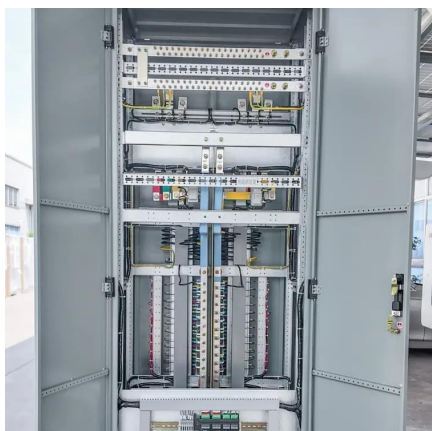
The Bluesun 20-foot BESS Container is a powerful energy storage solution featuring battery status monitoring, event logging, dynamic balancing, and advanced protection systems. It also includes automatic fire detection and alarm systems, ensuring safe and efficient energy management. The 20FT.

The BSI-Container-20FT-250KW-860kWh is a robust, turnkey industrial energy storage solution engineered for rapid deployment and high-density energy performance. Housed in a 20-foot container, this system integrates solar PV, energy storage, and advanced control components into a single unit, making.

This new system 5.015MWH BESS is based on lithium iron phosphate battery (LFP) and power conversion technology, KonkaEnergy designed the modular containerized battery energy storage system (BESS), which was successfully used in many scenarios, such as frequency regulation of power plant, peak.



20 feet outdoor energy storage container parameters



[Container energy storage technical parameters](#)

The EnerC+ Energy Storage product is capable of various on-grid applications, such as frequency regulation, voltage support, arbitrage, peak shaving and valley filling, and demand response.

[Request Quote](#)

[Setting JAVA_HOME environment variable in MS Windows](#)

Set the JAVA_HOME Variable Windows 7 - Right click My Computer and select Properties > Advanced Windows 8 - Go to Control Panel > System > Advanced System Settings Windows ...

[Request Quote](#)



[20FT Container 250KW 803KWH Battery Energy Storage System](#)

With its stackable and expandable architecture, it is easy to scale capacity and maintain. Safety and reliability are paramount, with maximum protection provided by the robust LFP battery and ...

[Request Quote](#)

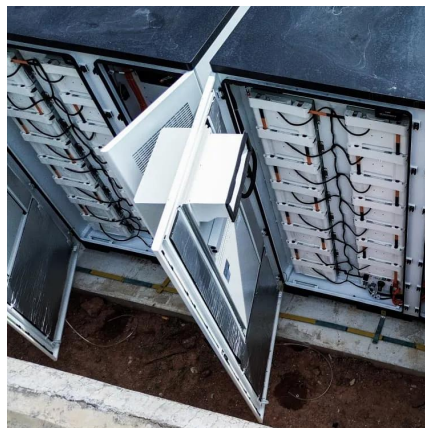


[Flyer S Series 20FT Container Lineup 210330](#)

The Energport S Series lineup of 20' outdoor rated containers are well suited to projects requiring higher energy and power capabilities and feature an integrated fire suppression system.



[Request Quote](#)



5.015MWH 20 Feet BESS Container, Liquid Cooling - KonkaEnergy

For more detailed information, please contact us with your full details and project parameters.

[Request Quote](#)



[URL encoding the space character: + or %20?](#)

As the aforementioned RFC does not include any reference of encoding spaces as +, I guess using %20 is the way to go today. For example, "%20" is the percent-encoding for ...

[Request Quote](#)



[5.015MWH 20 Feet BESS Container, Liquid](#)

...

For more detailed information, please contact us with your full details and project parameters.

[Request Quote](#)



20-foot energy storage container



The energy storage battery system adopts 1500V non-walk-in container design, and the box integrates energy storage battery clusters, DC convergence cabinets, AC power distribution ...

[Request Quote](#)



20-foot energy storage container

The energy storage battery system adopts 1500V non-walk-in container design, and the box integrates energy storage battery clusters, DC ...

[Request Quote](#)



[Why 20ft ISO Containers Are Widely Used in ...](#)

Discover the key advantages of using 20ft ISO containers for battery energy storage systems (BESS), including modularity, ...

[Request Quote](#)



BSI-Container-20FT-250KW-860kWh

Housed in a 20-foot container, this system integrates solar PV, energy storage, and advanced control components into a single unit, making it ...

[Request Quote](#)



[In a URL, should spaces be encoded using](#)



[%20 or +? \[duplicate\]](#)

@MetaByter I think it is more technically correct to phrase the question as "In a URL, should I encode the spaces using %20 or + in the query part of a URL?" because while the example ...

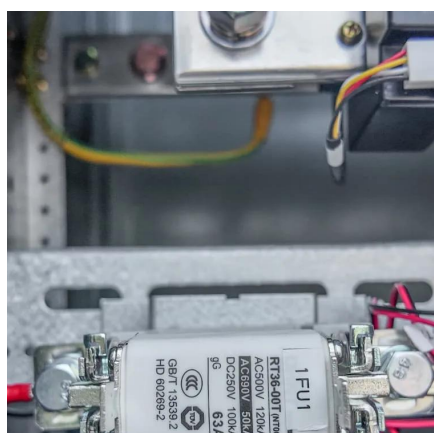
[Request Quote](#)



[NVM installation error on Windows. Cannot find the npm file](#)

I searched and found that versions 23.10.0 and 16.20.2 are present in the folders of the same name C:\Users\KS\AppData\Local\nvm. By analogy, I created a folder v0.12.2 and ...

[Request Quote](#)



c++

[OpenSSL Verify return code: 20 \(unable to get local issuer ...](#)

OpenSSL Verify return code: 20 (unable to get local issuer certificate) Asked 13 years, 5 months ago Modified 1 year ago Viewed 390k times

[Request Quote](#)



[BESS Container Sizes: How to Choose the Right ...](#)

Not sure which BESS container size fits your project? Discover the differences between 20ft, 40ft, and modular systems--plus expert tips ...

[Request Quote](#)



The value for C++20 is 202002L, as you can see at [cpp.predefined]p1.1: __cplusplus The integer literal 202002L. [Note: It is intended that future versions of this ...

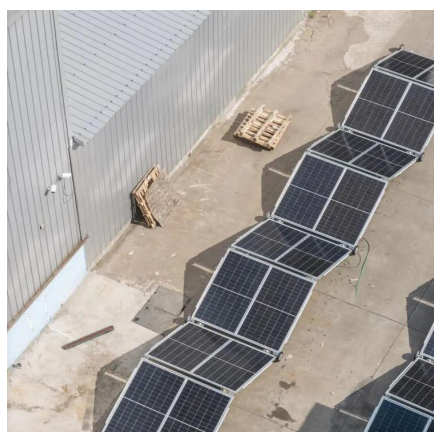
[Request Quote](#)



[BESS Container Sizes: How to Choose the Right Capacity](#)

Not sure which BESS container size fits your project? Discover the differences between 20ft, 40ft, and modular systems--plus expert tips to help you choose the right ...

[Request Quote](#)



Why 20ft ISO Containers Are Widely Used in Energy Storage ...

Discover the key advantages of using 20ft ISO containers for battery energy storage systems (BESS), including modularity, transportability, safety, and efficiency.

[Request Quote](#)



BSI-Container-20FT-250KW-860kWh

Housed in a 20-foot container, this system integrates solar PV, energy storage, and advanced control components into a single unit, making it ideal for remote industries, construction sites, ...

[Request Quote](#)



node.js



I'm using Windows as a simple user (I don't have any admin rights) and want to install NodeJS LTS. On the download site I have the choice to download only the binary ...

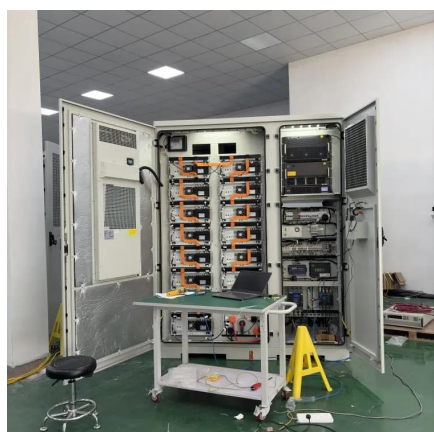
[Request Quote](#)



[The origin on why '%20' is used as a space in URLs](#)

I am interested in knowing why '%20' is used as a space in URLs, particularly why %20 was used and why we even need it in the first place.

[Request Quote](#)



[500kW/1.075MWh BESS 20ft Container Energy Storage ...](#)

Considering about the thermal control request for the battery and the structure of the energy storage container, the air conditioner is designed as the reliable and efficient climate control ...

[Request Quote](#)



http

Since it's not mentioned anywhere in the grammar, the only way to encode a space is with percent-encoding (%20). In fact, the RFC even states that spaces are delimiters and should ...

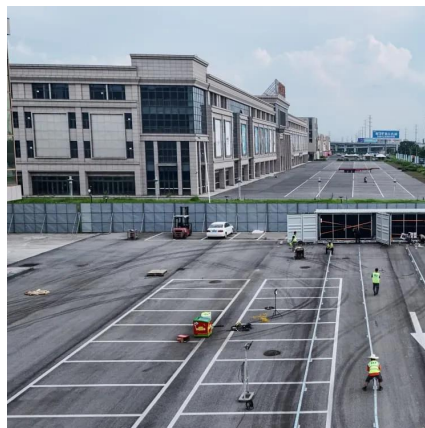
[Request Quote](#)

20 Feet Container



Load BAT 00kW 500kW/1MWh system is placed in a 20 feet outdoor container, including 1MWh battery system, 1 set of MPS0500, fire protection system and air conditioning system, etc., as ...

[Request Quote](#)



[How do I replace spaces with %20 in PowerShell?](#)

The output transformation you need (spaces to %20, forward slashes to %2F) is called URL encoding. It replaces (escapes) characters that have a special meaning when part of a URL ...

[Request Quote](#)



Contact Us

For catalog requests, pricing, or partnerships, please visit:

<https://energyinnovationday.pl>

Phone: +48 22 335 1273

Email: info@energyinnovationday.pl

Scan the QR code to contact us via WhatsApp.

