



16 Battery cabinet size





Overview

The Battery Cabinet Size 16 is designed for safe and organized storage of UPS batteries. It provides secure housing, proper ventilation, and easy cable management to protect your power system and extend battery lifespan. Ideal for homes, offices, server rooms, and industrial.

The Battery Cabinet Size 16 is designed for safe and organized storage of UPS batteries. It provides secure housing, proper ventilation, and easy cable management to protect your power system and extend battery lifespan. Ideal for homes, offices, server rooms, and industrial.

ed with a complete interior and exterior durable red or black powder c at. The front cover features a CAT 30 keyed door lock and lift-away hinge. Overall dimensions measure 22" wide y 10" high by 8.5" deep or 30" wide by 10" high by 8.5" deep or. Four 0.5" and 0.75" EMT conduit knockouts are.

Battery cabinet that includes Lithium-ion batteries, Battery Management System (BMS), switchgear, power supply, and communication interface. Battery cabinet that includes Lithium-ion batteries, Battery Management System (BMS), switchgear, power supply, and communication interface. Schneider.

With 10, 13, 16, or 17 Battery Modules Installation and Operation LIBSESMG10IEC, LIBSESMG13IEC, LIBSESMG16IEC, LIBSESMG17IEC LIBSESMG10UL, LIBSESMG13UL, LIBSESMG16UL, LIBSESMG17UL Latest updates are available on the Schneider Electric website 12/2024 Legal Information The information.

APC Trade-UPS is a 1-phase UPS program that offers new and existing customers the ability to trade in older battery backup units for the most up-to-date 1-phase power protection models at discounted prices. Select UPS (s) for your purchase. Continue to add units until you meet your minimum.

Battery Strings: The cabinet can accommodate two (2) 288 VDC battery strings. Each string is composed of four (4) trays of five (5) 12 VDC batteries each and a single tray of four (4) 12VDC batteries for a resulting 288VDC battery string. Only cabinets with Flame Retardant Batteries are suitable.

The Model BC Battery Cabinet is UL Listed and finished in textured red or beige to



match the various Gamewell-FCI control panels. The cabinet will house up to four (4) model B-31 or two (2) model B-55 batteries. The heavy duty cabinet, constructed of 16 gauge steel, is phosphate treated and primed.



16 Battery cabinet size



[SPECIFICATIONS FEATURES The BCA Battery Cabinet is ...](#)

With the ability to be securely wall mounted, these cabinets allow easy access to your batteries for quick maintenance while reducing the risk of unnecessary power drain, interference or ...

[Request Quote](#)

[Galaxy Lithium-ion Battery Cabinet IEC with 16 x ...](#)

Battery cabinet that includes Lithium-ion batteries, Battery Management System (BMS), switchgear, power supply, and communication interface. ...

[Request Quote](#)



Battery Cabinet B16

The Battery Cabinet Size 16 is designed for safe and organized storage of UPS batteries. It provides secure housing, proper ventilation, and easy cable management to protect your ...

[Request Quote](#)

LIBSESMG16UL

Battery cabinet that includes Lithium-ion batteries, Battery Management System (BMS), switchgear, power supply, and communication interface.

[Request Quote](#)



APC by Schneider Electric Galaxy Lithium-ion Battery Cabinet UL With 16

Buy a APC by Schneider Electric Galaxy Lithium-ion Battery Cabinet UL With 16 x 2.04 kWh Battery Modules or other UPS Battery Backups at CDW

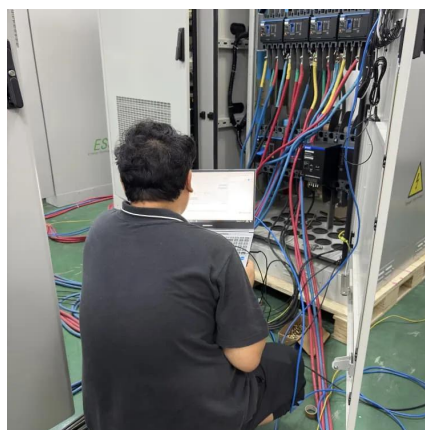
[Request Quote](#)



[APC LIBSESMG16UL Galaxy Lithium-Ion Battery Cabinet UL ...](#)

The Lithium-ion battery solution significantly reduces battery footprint and weight to allow more effective use of space. It also doubles battery life and simplifies maintenance compared to ...

[Request Quote](#)



[BC Series, Batteries and Cabinets Data Sheet](#)

The cabinet will house up to four (4) model B-31 or two (2) model B-55 batteries. The heavy duty cabinet, constructed of 16 gauge steel, is phosphate treated and primed with zinc chromate ...

[Request Quote](#)



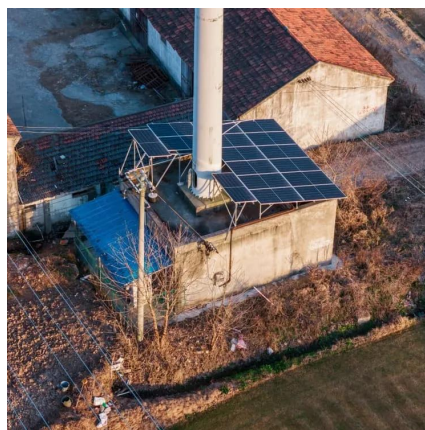
Galaxy Lithium-ion Battery Cabinet



IEC with 16 x 2.04 kWh battery

Battery cabinet that includes Lithium-ion batteries, Battery Management System (BMS), switchgear, power supply, and communication interface. Reduces the battery room size and ...

[Request Quote](#)



[755-00086 R02 BC16 MITSUBISHI MANUAL](#)

The BC16 battery cabinet is equipped with four casters, two swivel types in front and two rigid types in the back. Move the cabinet into the desired location and lock the front casters.

[Request Quote](#)

APC LIBSESMG16UL Galaxy Lithium-Ion Battery Cabinet UL with 16 ...

The Lithium-ion battery solution significantly reduces battery footprint and weight to allow more effective use of space. It also doubles battery life and simplifies maintenance compared to ...

[Request Quote](#)



[APC by Schneider Electric Galaxy Lithium-ion ...](#)

Buy a APC by Schneider Electric Galaxy Lithium-ion Battery Cabinet UL With 16 x 2.04 kWh Battery Modules or other UPS Battery Backups at CDW

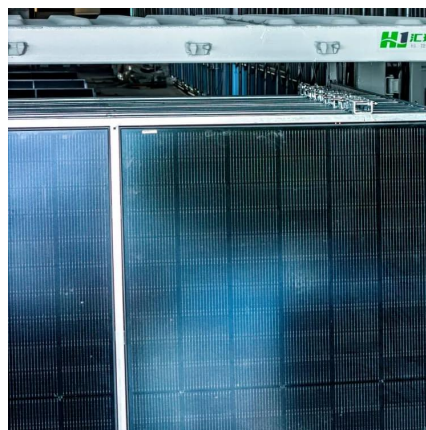
[Request Quote](#)

Galaxy Lithium-ion Battery Cabinet



Galaxy Lithium-ion Battery Cabinet. With 10, 13, 16, or 17 Battery Modules Installation and Operation. LIBSESMG10IEC, LIBSESMG13IEC, LIBSESMG16IEC, LIBSESMG17IEC ...

[Request Quote](#)



Mini Battery Cabinets

16 gauge cold rolled steel construction
Dimensions are 17" wide x 8" high x 4" deep
"BATTERY CABINET" in white 2" lettering CAT 30
keyed door lock (custom locks available)

[Request Quote](#)



Contact Us

For catalog requests, pricing, or partnerships, please visit:

<https://energyinnovationday.pl>

Phone: +48 22 335 1273

Email: info@energyinnovationday.pl

Scan the QR code to contact us via WhatsApp.

